



Rt  
OVERSIZE









3 9077 05025 7099 51

Public Library  
**ROCHESTER PUBLIC LIBRARY  
REFERENCE BOOK  
NOT FOR CIRCULATION**

Central Library of Rochester and  
Monroe County  
Local History & Genealogy Division  
115 South Avenue  
Rochester, New York 14604

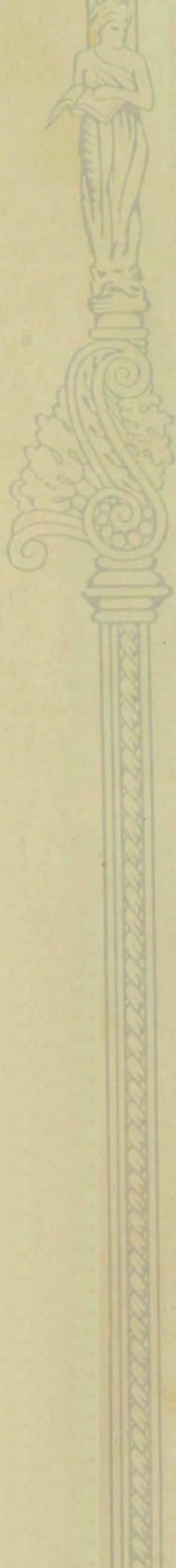




Margaret Palmer

E x

l i b r i s







S  
C  
H  
O  
O  
L







= 1928 =

# Monrolog

PRESENTED BY THE  
GRADUATING CLASSES OF  
**MONROE HIGH SCHOOL**  
ROCHESTER, NEW YORK  
FOR  
**JANUARY AND JUNE**  
NINETEEN HUNDRED AND  
TWENTY-EIGHT





## Foreword

THE MONOLOG OF 1928 IS THE  
COMBINED WORK OF THE STAFFS  
OF THE TWO GRADUATING CLASSES  
OF MONROE HIGH SCHOOL,  
JANUARY AND JUNE.

AS ITS NAME INDICATES IT IS A  
RECORD-WRITTEN AND PICTORIAL  
OF THE MEMBERS OF THESE CLASSES  
AND OF THE CHIEF CLASS EVENTS  
IN WHICH THEY TOOK PART.





# Dedication

THE CLASSES JANUARY AND JUNE,  
1928, DEDICATED THIS, THE SECOND  
ANNUAL EDITION OF THE

## MONROLOG

TO

VICE-PRINCIPAL

CHARLES H. HOLZWARTH, PH. D.

IN GRATEFUL APPRECIATION OF HIS  
HELPFUL GUIDANCE, HIS UNDER-  
STANDING AND FRIENDSHIP, AND  
HIS SINCERE INTEREST IN THEIR  
ACTIVITIES.





## Order of Books

*Faculty*

*Seniors*

*Organizations*

*Sports*

*Features*

*Homerooms*





Hang your memory  
 here in  
 Babylon through  
 N. B. 122

F  
 A  
 C  
 U  
 L  
 T  
 Y





PHILLIP SCHNEIDER

*"Phil" Schneider*



MARY FARRELL

## Faculty Advisors

WE, the members of the Senior Classes of Monroe High School, for the year Nineteen Hundred and Twenty-eight, express appreciation to the Faculty Advisors whose guidance, good will and generous co-operation have been a constant help to us, both as individuals and as a class organization.



# Faculty



WILLIAM E. HAWLEY  
*Principal*

WILLIAM E. HAWLEY . . . . .	<i>Principal</i>
CHARLES H. HOLZWARTH . . . . .	<i>Vice-Principal</i>
JANE F. CAMERON . . . . .	<i>Girls' Advisor</i>
ELNORA MARTIN . . . . .	<i>Visiting Teacher</i>
WALTER J. WILLIS . . . . .	<i>Boys' Advisor</i>
MRS. CELIA WILLIS . . . . .	<i>Secretary</i>
MINERVA WARNER . . . . .	<i>Clerk</i>

## ENGLISH

GEORGE S. CARHART

Christabel Abbott	Mae Leary	Madgalin C. Schantz
Charles Carver	Phedora Leete <i>Phedora Leete</i>	Elizabeth Schleyer
Helen Jones	Katherine Mann	Alice M. Stevenson
Grace Keim	Elizabeth Middaugh	Mrs. Jennie Stolbrand
Ida E. Kurzrock	Mrs. Marjorie Morrison	Mrs. Ruby H. Tallmadge
Mrs. Ina R. LaWall	Helen O'Connell	Helen S. Williams

## ANCIENT LANGUAGES

OLIVE H. MAXWELL

Joseph Conroy	Florence M. Farlow	Evelyn F. Westberg
	Sadye Furlong	

## MODERN LANGUAGES

CHARLES H. HOLZWARTH

Emily Beebe	Henry Cardew	Mrs. Othlie Rupert
Helen Bradley	Rena Dumas	Evelyn Waugh
	Lucile Hunt	

## SOCIAL STUDIES

GRACE SCHNEEBERGER

Winifred Adrian	Charles Gates <i>Charles Gates</i>	Mrs. Jeanette Strayer
Ida Campbell	Mrs. Ruth C. Herron	Claude Wallace
Dayton Fleming		John Wiles

*Earl J. Burnett*

Faculty—(CONTINUED)

MATHEMATICS

EARL J. BURNETT

Mrs. Nellie C. Kates  
Rachael Langworthy  
Madeline Madigan  
Louise Manwaring

Martha Middaugh  
Robert Montfort  
Mrs. Florence B. Ramp

Martha Rowland  
Laidislaw Russin  
Willis G. Saunders  
Laura Spurr

SCIENCE

C. L. Ackley  
Avery C. Bacon  
William Hutchinson

Margaret King  
Grace Murray

Laura C. O'Neil  
Hazel Parker  
Harold B. Saunders

COMMERCIAL

V. JAMES MORGAN

Edwin Andrews  
Mrs. Clara Brasser  
Harmon J. Bulley

Mary Farrell  
Clarence W. Gadway  
Bernice Giguee  
Nancy Hause

Mrs. Frances Smith  
Mrs. Lola M. Smith  
Marion Widmer

*Marion L. Widmer*

INDUSTRIAL

BION R. JONES

George Albrecht  
Harry P. Bohrer  
Herbert Comfort  
Clayton J. Dudley  
Glenn E. Forward  
Edward W. Hartel

Louis G. Hofman  
Frank E. Hosc  
Herbert W. Ludwig  
Elmer Meulendyke  
Ray Murphy  
Arthur Neff

Herbert M. Reed  
Glenn H. Rockcastle  
Philip Schneider  
Ralph N. Seeley  
Mrs. Jane S. Webb  
Frances Worthing

MUSIC

Lulu M. Dobbin  
Grace Miller

Guy Hague  
George Troup

Mrs. M. VanZandt  
Eva Wannermacher

ART

Marguerite Collins  
Evelyn Osborn

Mable Hartz

John Reynolds  
Lee N. Sherwood

DRAMATICS

Winona English

Catherine Conrow

HOUSEHOLD ARTS

Cecelia Carey  
Lulu C. Covel

Marion Fish

Anna L. Jackman  
Margaret Stewart

HEALTH EDUCATION

LEWIS A. MICHELSON

Leila Ashley  
Burns W. Beach

Mabel Pooler  
Mrs. Grace S. Babcock

Joseph Ulrich  
Anne L. Cummings  
*Nurse*

LIBRARIANS

CLARA CURTISS

Florence Kenyon

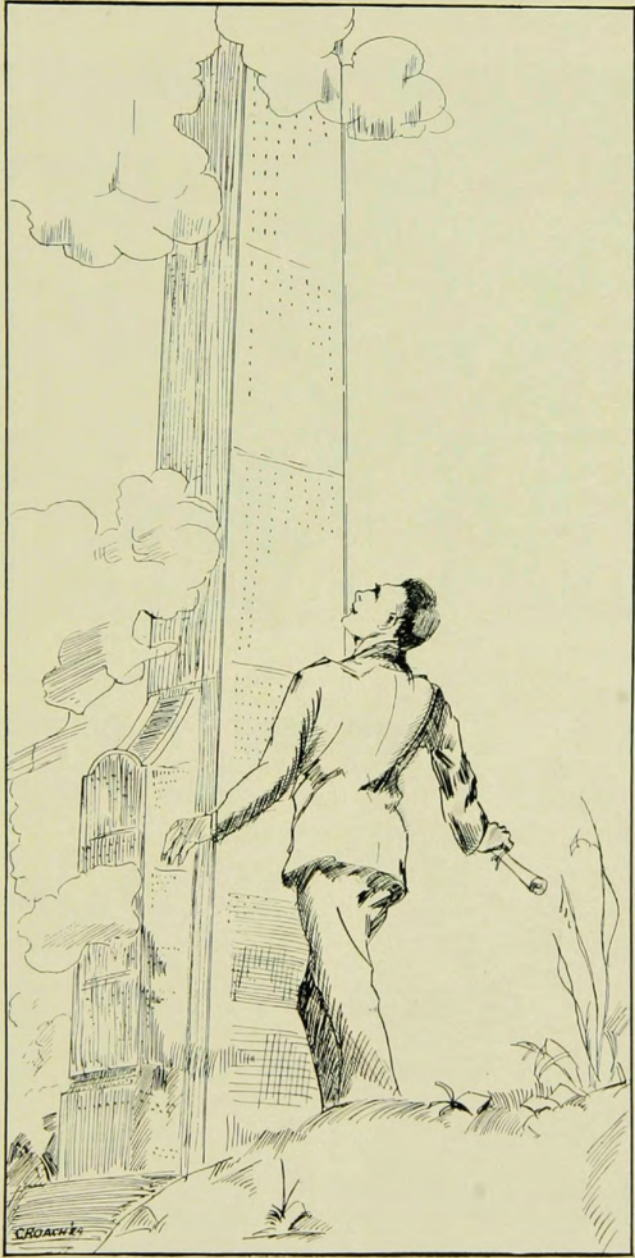
GUIDANCE

W. W. Jones

Mildred Lincoln

Una Huchinson





# SENIORS



*Senior Class Officers*

*January 1928*

- WILLIAM AGNEW . . . . . *President*  
 DOROTHY SMITH . . . . . *Vice-President*  
 SARAH CLARK . . . . . *Secretary*  
 ARTHUR SERGEANT . . . . . *Treasurer*  
 CARL PAUL . . . . . *Social Chairman*



WILLIAM AGNEW 2 Northumberland Road

"BILL"

*The strength of thine own arm  
Is thy salvation!*

Homeroom Activities (2, 3), Band (2), Orchestra (2),  
Romancers (4), Senior Play (4), Skating Team (3), Hi-Y  
Club (3, 4), Statistics Editor, MONROLOG (4), Student Council  
(3, 4), President of Class (3, 4), Swimming (4), National  
Honor Society (4).

No. 29 School University of Rochester

HAZEL M. AYRES 450 Averill Avenue

"BILLIE"

*A good heart is worth gold.*

Dress Committee, Class Day (4), Hiking Club (3), Usher,  
Senior Play (4).

No. 12 School Rochester Normal

ROBERT WILLIAM BASCHNAGEL 824 South Goodman Street

"BOB"

*Second to none—  
In more ways than one!*

Track Team (3, 4), Cross-Country (3, 4), Captain, Cross  
Country (4), Homeroom Activities, Sport's Editor, MONRO-  
LOG (4), Sales Manager, Senior Play (4), Stunt Committee,  
Class Day (4).

No. 24 School Mass. Institute of Technology

FRANK BAKEWELL BOWIE 146 Westminster Road

"FRANK"

*For if she be not for me  
What care I for whom she be!*

Band (2), Orchestra (2), Swimming (2), Class Treasurer  
(2), Track (3, 4), Hi-Y Club (3, 4), President Hi-Y (4),  
Homeroom Activities (3), French Play (4), Homeroom  
President (4), Standard Bearer, Romancers (4), Pin and  
Ring Committee (4), Class Prophet (4), Annual Board  
(4), Manager, Morning Program, Senior Day (4), Wearer  
of "M," National Honor Society (4).

No. 23 School Union

LUCILE E. BREWER 574 Averill Avenue

"LUCILE"

*Shall I compare thee to a summer's day?  
Thou art more lovely and more temperate.*

Editor-in-chief, Monroe Life (2, 3, 4), Assistant Editor,  
Monroe Life (3), Vice-President of Class (2), M-Y Club  
(3, 4), French Play (4), Winner of Literary Contest (3),  
Vice-President, Student's Association (3), Secretary, Stu-  
dent's Association (4), Pin and Ring Committee (4), Senior  
Play (4), Chairman, Banquet Committee, Class Day (4),  
Editor, MONROLOG (4), Custodian of the Flag (4), National  
Honor Society (4).

No. 15 School University of Rochester

C. ALBERT BURNETT 504 Mt. Hope Avenue

"CHARLIE"

*The "Crown of Sports" sits well upon his brow.*

President, Student's Association (3), Athletic Representa-  
tive (2), Senior Play (4), Soccer (2, 3, 4), Captain of Soccer  
Team (2), Basketball (2, 3, 4), Baseball (2, 3, 4), Captain,  
Baseball (3), Track (2), Tennis (3), Tennis Tournament  
(2, 4), Swimming (2), Skating (2), Homeroom Bowling  
(3), Homeroom Volley Ball, Homeroom President (2),  
Costume Committee, Class Day (4), National Honor Soci-  
ety (4), Captain Basketball (4).

No. 13 School Springfield







EVELYN CAMPBELL "EVE" 60 Edmonds Street  
*Ah! Come and trip the light fantastic!*  
 Band (2), Basketball (2, 3, 4).  
 No. 15 School Undecided

VIOLET ELEANOR CARMICHAEL 365 Wisconsin Street  
 "MICKEY"  
*She has a matchless eye,  
 And a winning smile.*  
 Gregg Artist's Certificate of Membership (4), Gregg Transcription Certificate (4), Royal Typewriting Certificate (2), Mixed Chorus (2), Voice Training (2), President Homeroom (2), Secretary of Homeroom (4).  
 No. 13 School Rochester Business Institute

MARGARET CARROLL 36 Thayer Street  
 "PAT"  
*She is wealthy in her friends.*  
 Academy of The Sacred Heart Mechanics Institute

SARAH M. CLARK 336 Meigs Street  
 "SALLY"  
*Noble in every thought  
 And in every deed.*  
 M-Y Club (3, 4), Secretary of Class (4), French Play (4), Orchestra (2, 3, 4), Vice-President of Homeroom (2), Art Editor, MONOLOG.  
 No. 15 School Mechanics Institute

PEARLE V. COLE 314 Laburnum Crescent  
 "PAL"  
*Not enjoyment and not sorrow  
 Is her destined end or way.*  
 Royal Certificate (3), Underwood Award (3), Waitress Senior Banquet (4), Homeroom Activities (4), Vice-President, Homeroom (4).  
 No. 15 School Undecided

MARTHA EPSTEIN 193 Lyndhurst Street  
 "EPPY"  
*All we need is a friend or two  
 Whatever the rest may say or do!*  
 Royal Award; Underwood Award; Gregg Shorthand Award.  
 City Normal School Undecided



SIDNEY FEYDER 25 Harper Street  
"SID"

*And now what question can I ask?*

Orchestra (2, 3), Constitutional Oratorical Contest (3), Senior Play (4), Homeroom President (4), Photograph Editor, MONROLOG, Costumes Committee, Class Day (4), Debating Club (3, 4), Vice-President, Debating Club (4), Homeroom Activities (2), Honorable Mention Literary Contest (3), Romancers (4), National Honor Society (4).  
No. 23 School University of Rochester

MILDRED FRANK 631 Meigs Street  
"MILDRED"

*The dignity of simplicity.*

Glee Club (4), Mixed Chorus (2, 4), M-Y Club, Hit-Pin Team, Operetta.  
No. 24 School Undecided

ROBERT EDWARD FRIDD 82 Broadway  
"BOB"

*I am monarch of all I survey.*

Boys' Glee Club (2, 3, 4), Mixed Chorus (4), Band (2, 3, 4), Stage Manager Senior Play (4), Track Team (2), Senior Assembly Electrician.  
No. 12 School Undecided

RICHARD GERMANN 1 Pearl Court  
"DICK"

*He holds the world  
But as the world.*

Wrestling (3).  
No. 15 School Undecided

WALTER GIBAUT 44 Priem Street  
"JABBER"

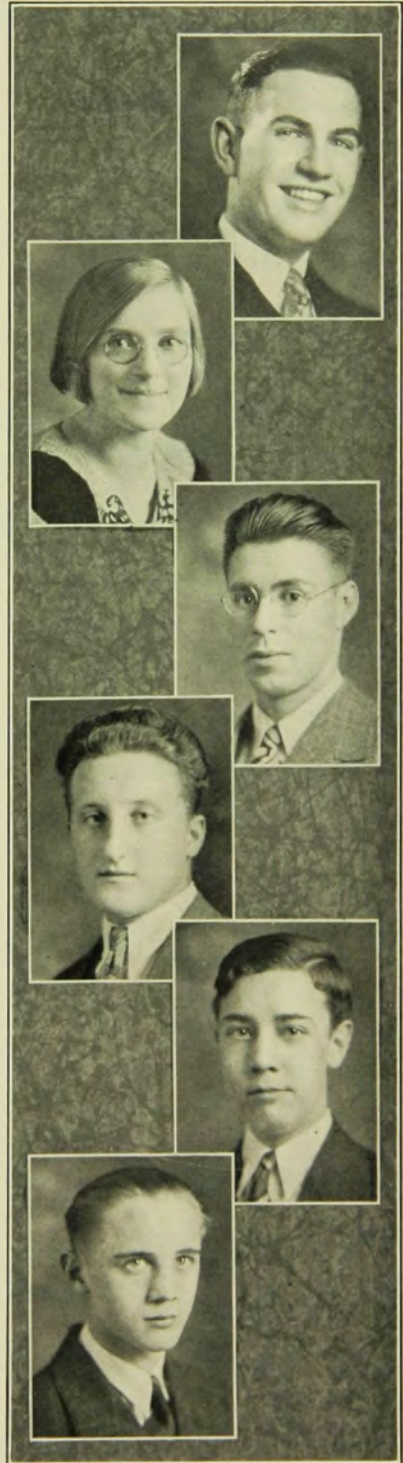
*I will do my best—  
Give all that I can  
And all that I have.*

Boy's Glee Club (4), Mixed Chorus (4), Electrician, Senior Play, Homeroom Vice-President (4), Senior Assembly Electrician.  
No. 15 School Undecided

THEODORE F. HAIDT 36 Cambridge Street  
"TED"

*His name means nothing;  
He loves us all.*

Orchestra (2), Swimming Team (2, 3, 4), Senior Play (4), Track Team (3, 4), Homeroom Activities (2).  
No. 23 School Cornell







JOHN M. HARVEY 204 Mt. Vernon Avenue  
"JOHNNIE"

*Fearless minds climb soonest  
Unto crowns.*

Band (2, 3, 4), Glee Club (3, 4).  
No. 24 School

Undecided

LEWIS CHARLES HELLEMS 80 May Street  
"LOUIE"

*I spend no time in looking  
For a girl to do my cooking  
As I'm quite a clever hand at making stews.*

Band (2, 3, 4), Orchestra (2, 3, 4), Glee Club (3, 4), Chorus  
(4), Manager, Cross-Country Team (4).  
No. 13 School Eastman School of Music

ALBERT C. HOBBIE 41 Brighton Street  
"AL"

*His hobby is horses,  
No! not hobby horses.*

Senior Play (4), Senior Candy Sale (4).  
No. 15 School

Undecided

GEORGE CHARLES HUNT, JR. 20 Kilbourne Road  
"CHUCK"

*Ever changing like a joyless eye  
That finds no object worth its constancy.*

Publicity Manager, Senior Play (4), Senior Play (4),  
Publicity Manager, MONROLOG (4), German Club (4),  
Monroe Life (4), Publicity Manager, French Play (4).  
No. 15 School Yale

JACK M. KIMBLE 74 Manhattan Street  
"JACK"

*You ask me very pointedly in what does Jack excel,  
But he's clever in so many ways it's really hard to tell.*

Class President (2), Homeroom President (2, 3), Band  
(2, 3, 4), Orchestra (2, 3, 4), Inter-High Band (3, 4), French  
Play (4), Romancers (4), Senior Play (4), Honorable Men-  
tion Literary Contest (4), Homeroom Activities (2, 3),  
Assistant Editor, MONROLOG (4), Song Committee Class  
Day (4), Master of Ceremonies (4), Hi-Y Club (3, 4),  
Vice-President Hi-Y Club (4), National Honor Society (4).  
No. 12 School Mass. Institute of Technology

GORDON LEVINSON 54 Shepard Street  
"GORD"

*I thought I knew I knew it all  
But now I must confess  
The more I know, I know I know  
I know I know the less.*

Swimming Team (2, 3, 4), Homeroom Activities (2, 3),  
Senior Play (4), Property Manager, Class Day (4), The  
Romancers.  
No. 15 School Mass. Institute of Technology



MYRTLE B. MATTICE 10 Bly Street

"PEG"

*Shadows dark and sunlight sheen  
Alternately come and go.*

No. 24 School Undecided

RAYNA MARION MOULD 15 Bond Street

"RAINY"

*To herself she is true  
And therefore must be true to you.*

Royal Typewriting Certificate, Underwood Typewriting Pin, Gregg Transcription Certificate, Costume Committee, Class Day, Pin Committee.

No. 13 School Rochester Business Institute

DOROTHY JUNE NEWCOMBE 293 Farmington Road

"DOT"

*Her very frowns are fairer far  
Than smiles of other maidens are.*

Secretary of Class (4), Royal Award, Underwood Award, Gregg Transcription Award, Gym Award.

No. 23 School Rochester Business Institute

CARL PAUL 896 Highland Avenue

"CARL"

*Here am I! Gangway!*

Band (2), Orchestra (2), Homeroom (3), Debating Club (3, 4), President, Debating Club (3), French Play (4), The Romancers (4), Senior Play (4), Announcement Committee (4), Social Chairman (4), Music and Drama Editor, Monrolog (4), Toastmaster, Class Day (4), National Honor Society (4).

No. 15 School University of Rochester

HOWARD J. PRATT 1057 North Street

"HOWIE"

*Studying bores ye. I hate to be bored.*

Baseball (2, 3, 4), Reserve Basketball (2), Basketball (3, 4), City Normal School Mechanics Institute

EDGAR J. PRESENT 194 Edgerton Street

"ED"

*A subtle philosopher is our "Ed"  
He dares to think and will not be led.*

Homeroom Activities, The Romancers (4), Property Manager, Senior Play (4), Manager of Swimming Team (4), National Honor Society (4).

No. 23 School University of Pennsylvania







GEORGE PROSEUS 61 Winter Street

"GEORGE"

*Sometimes I set 'n think—  
Other times I just set.*

Canandaigua Union Undecided

WILHELMINE RENSHAW 299 Mulberry Street

"MINEY"

*Things done well and with a care  
Exempt themselves from fear.*

Glee Club (2, 3, 4), Vice-President, Glee Club (3), Mixed Chorus (2, 3), "O Hara San," M-Y Club (4), Washington Birthday Pageant (3).

No. 24 School Rochester Business Institute

V. IRENE REVIER 431 Caroline Street

"RENEE"

*We all "revere" Irene.*

Mixed Chorus, Dress Committee, Class Day, Girl's Club, Dancing Class.

No. 24 School Undecided

MARJORIE F. RICHMOND 48 Howell Street

"MARGIE"

*Her motto is—  
Do all the good you can  
By all the means you can.*

Royal Award, Underwood Award.  
Rochester Business Institute

MILDRED A. RIDLEY 71 Edmonds Street

"KID"

*She speaks, behaves, and acts  
Just as she ought.*

Basketball (2, 3, 4), Swimming (2, 3, 4), Tennis (4), Mixed Chorus (2).

No. 15 School City Normal School

HAROLD RIVLIN 28½ Martin Street

"HAROLD"

*He always takes things by the smooth handle.*

Senior Play (4), Debating Club (2).  
Washington Junior High School University of Rochester



SARAH SCHENBERG 210 Park Avenue

"SARAH"

*Is there a heart  
Her smile cannot touch?*

Typewriting Award, Gregg Award.  
Washington Junior High School Undecided

ANNA Q. SENDEROV 229 Meigs Street

"ANN"

*The girl with the silvery laugh.*

Typewriting Award (3), Gregg Award (3).  
No. 13 School Plattsburg State Normal

ARTHUR J. SERGEANT 70 Harper Street

"ART"

*Give every man thine ear, but few thy voice.*

Band (2), Wrestling (2, 3), Senior Play (4), Class Treasurer (4).  
No. 23 School University of Rochester

DOROTHY R. SMITH 19 Sanford Street

"DOT"

*Never bloomed the earth so gaily  
Never shown the sun so brightly  
As for her they shine and blossom.*

Homeroom President (3), Vice-President, Class (4), M-Y Club (4), Glee Club (2, 3), Gregg Award (2, 4), Typewriting Award (3, 4), Homeroom Activities (4), Senior Play (4), Operetta (2), Waitress Senior Banquet (4), Chairman, Senior Tea (4).  
No. 15 School Undecided

EARL R. SMITH 62 Richmond Street

"OIL"

*If half my ships come home from sea  
And bring their precious freights to me  
Ah, well! I will have wealth as great  
As any king who sits in state.*

Soccer (3, 4), Track (4), Reserve Basketball (3, 4), Reserve Baseball (4), Homeroom Activities (2, 3, 4), Senior Play (4), Assistant Manager, Class Day (4).  
No. 10 School Springfield

HELEN L. SNEARING 78 Boardman Street

"LOUIE"

*I will be sad for nobody.*

Glee Club (2, 3, 4), Vice-President, Glee Club (4), Secretary of Glee Club (3), "O Hara San," Mixed Chorus (2, 3), Washington Birthday Pageant (2), Tennis Club (4), M-Y Club (3, 4).  
No. 15 School Undecided





ABRAHAM P. STROM 181 Barrington Street  
"GIGGLES"

*Fortune and I are friends!*

Band (3, 4), Homeroom Basketball (2), Cross-Country Team (4).  
No. 12 School University of Buffalo

MAGUERITE GIBSON WEINER 17 Werner Park  
"MARGE"

*Little care I if little I am,  
I can talk just as much  
As a bigger girl can.*

Glee Club (2, 3, 4), Mixed Chorus (2, 3), Underwood Typewriting Award (2), Honorable Mention Monroe Life Literary Contest (2), Operetta (3), M-Y Club (3, 4), Vice-President, Homeroom (3), Washington Birthday Pageant (3), Senior Play (4), Chairman, Luncheon Committee (4).  
No. 23 School Undecided

BELLE C. WEISS 16 Richard Street  
"BELLE"

*For her the air is full of freshness  
And the earth is bright and joyous.*

Homeroom Activities (2, 3), Glee Club (2), Orchestra (2), Mixed Chorus (2), Riding Club (3), Tennis Club (4), Senior Play (4).  
No. 12 School City Normal School

CARROLL LOUIS WILSON 1359 Highland Avenue  
"CARROLL"

*How happy is he born and taught  
Whose armor is his honest thought.*

Homeroom President (4), General Chairman, Class Day (4), Business Manager, MONROLOG (4), Announcement Committee (4), H-Y Club (4), National Honor Society (4)  
No. 23 School Mass. Institute of Technology



## *Good - Bye*

*Good-bye! Can one word sever  
The years of work and play,  
When we, in our youthful wisdom,  
Thought Life a holiday?*

*Good-bye! And the Race is on!  
We know not fear nor dread.  
The track—shall we call it Adventure,  
And Success the goal ahead?*

*Good-bye! Will the newer To-morrow  
Erase all thoughts of To-day?  
Shall each pass from the life of the other  
And silently slip away?*

*Good-bye! Old pal, we shall meet, I know  
In the quiet of Reverie;  
And each shall recall the other  
In sweetest memory.*

L. E. B.

## Senior Log

*Being the complete account of the voyage of the class of 1928*

— 1925 —

- JAN. 5—The famous Class of '28 crew embarked on its maiden voyage in the good ship "MONROE." Spiritedly cleared port of Alexander.
- FEB. 2—Passengers entertained by hotly contested "tug-of-war" between Jan. '28 crew (us) and aged, decrepit Jan. '27 crew (them). June '27 (they) proved to be good land lubbers and standing their ground pulled our 25 struggling seamen over the line.
- FEB. 13—Big pow-wow over election of crew's cruise officers. The balloting rocked the ship dreadfully. When the fog lifted the following were elected:
- |                                      |  |
|--------------------------------------|--|
| <i>President</i> —Jack Kimble        | <i>Treasurer</i> —Frank Bowie                |
| <i>Vice-President</i> —Lucile Brewer | <i>Chairman Social Committee</i> —Ruth Irons |
| <i>Secretary</i> —Catherine Woodruff |  |
- FEB. 20—Big Soph Party given by us (much to our purser's discomfiture). High spirits caused by grape (or was it orange) grog.
- MAR. 18—"Monroe Life," the one and only, "beware of imitations" ship's chronicle celebrated its first anniversary. Lucile Brewer succeeded Fred Kates as editor-in-chief.
- APRIL 26—Health campaign. Sailors obliged to scrub to present natty appearance.
- MAY 1—Health campaign over. Scrubbing ceased.
- MAY 22—Soph hop. Many able seamen disabled in game called "get your refreshments."
- JUNE 3—Entertained in assembly by "*L'Anglais Tel Qu' On Le Parle*" (or what have you)?
- JUNE 10—Moving-up Day (school looked like a checkerboard). All lucky sailors received service stripes. Medal and certificates awarded ship's clerical staff for proficiency in typing. Letters awarded Soph team members.
- JUNE 12—Senior day for plebes, being graduated from Junior High brig, provided field day for bored sophomore seamen. Skulls of Junior High rogues too thick to be cracked.
- JUNE 15—All sailors had exams. S - O - S.
- JUNE 19—Ratings given. Everybody happy?? Relief came in the form of ten weeks shore leave by order of Rear Admiral Hawley.

\* \* \* \* \*

- SEPT. 8—Furlough ended. Back to swabbing decks.
- SEPT. 17—Monroe Hi-Y club organized for good of sailors.
- SEPT. 30—Oscar Katz and Fred Kates threw a couple of fits in assembly and were duly elected cheer leaders.
- OCT. 23—Monroe sailors tied anchor to Kodak's soccer team (3 - 2).
- NOV. 6—All first class passengers enjoyed first Senior High inter-class party. Midnight Serenaders provided musical treat. Now we know why flat footed sailors are rejected.
- NOV. 25—Program presented in assembly by Monroe Hi-Y club.
- DEC. 4—Monroe seamen swamped Charlotte's Lakesiders in basketball (34 - 26).
- DEC. 11—Good-will boatload of Monroe's sailors stopped at Attica. Proudly stroked the crew out of the harbor carrying pelt of Attica basketball team (24 - 13).
- In celebration an inter-class dance offered wild night of dissipation from 8 to 11 on the slippery main deck.

— 1926 —

- JAN. 8—Monroe torpedoed Kodak High (26 - 16). Ross, Saperstone, Williams, Whipple, McNab, Stein and Jobs directed the fatal shot.
- JAN. 18—Struck coral reefs near Examinations Islands. Contemplated being rated Junior Gobs.
- JAN. 25—Re-embarked for a long and hazardous journey.
- FEB. 19—The decks resounded with the sound of shuffling feet during the first inter-class dance of the season.
- FEB. 22—Gobs went ashore to present the pageant, "Builders of the Ship," at the Eastman Theatre. They were directed by Miss Winona English.
- MAR. 19—The worthy chronicle of the Good Ship Monroe, the Monroe Life, celebrated its second anniversary.
- APRIL 23—Monroe's baseball team had an encounter with Caledonia; the latter ended nine points in its wake. Another dance was the means of celebrating.
- APRIL 30—A committee, composed of Betty Backus, Catherine Laney, Margaret Williams, Fred Kates, Arden Howland and Wallace Ely were elected to draw up a final report on the navigation of the ship.
- MAY 13, 14—O Hara San, an operetta, was presented, this time on home waters and under the direction of Miss Eva Wannemacher.
- MAY 17—The sea legs of Monroe proved as efficient on land as on water when our track team led Kodak's by a score of 60½ to 29½.



## Senior Log—CONTINUED

- MAY 26—Oil, which might have been better used to calm the troubled waters, was spattered in the nominations of the officers to guide the ship. The nominees were: Admiral Kates, Beyland, Southworth; Vice-Admiral Manson, Henderson; Log-Keeper Brewer, Russell, Rodger, Howland, Draper, Scheible
- MAY 28—After two days riot there emerged—  
                     Fred Kates, *President*    Dick Henderson, *Vice-President*    Fred Draper, *Secretary*
- JUNE 9—Gobs came in for due mreit on moving-up day. Athletic letters were awarded and Monroe Life pins were given to Brewer, Kates, Chantrueil, Henderson, Walker and Williamson.
- JUNE 11—The boat experienced strange tremors, not from the waves without, but from the stamping feet within caused by an inter-class dance.
- JUNE 14—Even sailors did not prove immune to checking - up the darkness that comes before dawn.
- JUNE 18—We were given a two months' leave.
- \* \* \* \* \*
- SEPT. 7—Old faces tanned by the landman's sun were good to see.
- SEPT. 28—The ship's guiding body met for the first time and showed excellent judgment in avoiding reefs.
- OCT. 28—On Henderson's resignation of his vice-admiralty, Southworth was elected to succeed him and, at the same time, Katz and Clark were elected cheerleaders.
- OCT. 29—Monroe's sea legs once more stood them in good stead when they enabled its soccer team to leave Penn Yan's completely stranded.
- NOV. 29—Sailors were rejoiced to find the *Good Ship Monroe* embellished by a new dining salon.
- DEC. 6, 10—A campaign to teach uncultured gobs the importance of courtesy was conducted by members of the Hi-Y Club, M-Y Club, Triangle Club, and Girl Reserves.
- DEC. 17—On foreign waters the Monroe basketball team clipped 25 knots to Attica's 15.
- DEC. 20—Frozen waters compelled the crew to desert the ship till Christmas vacation was completed.
- 1927 —
- JAN. 3—The old boat was once more ready for occupation.
- JAN. 17—Those who did not wish to drift got into condition for tests once more.
- JAN. 21—As the last class of the neighboring Junior High graduated we became no longer Junior Seamen but full-fledged Seniors.
- FEB. 11—Athletics once more becomes the talk of the ship as Monroe's Basketball team almost upsets Holley's riding on our trail to a score of 22 - 16.
- MAR. 16—The ship's chronicle celebrated its fourth anniversary.
- APRIL 1—Sweet music spread over the waters as still another inter-class dance was held.
- APRIL 8—Sailors went in for French, this class presenting a play along with two from the graduating class.
- JUNE 10—We fruitlessly threatened to overturn the boat in which our predecessors celebrated the first Monroe High Senior Day.
- JUNE 13—The seas looked rough once more as exams begin.
- JUNE 20—As the first class was graduated we become sailors of the highest rank in Monroe.
- \* \* \* \* \*
- SEPT. 14—The January class began a busy term as senior seamen, starting with a class meeting presided over by President Bill Agnew.
- SEPT. 17—Bill Dean, Captain of Monroe Golf team, won Junior City Championship at Durand-Eastman squelching Dan McAvoy 4 to 3.
- SEPT. 28—M-Y elected officers:
- |                                     |                                  |
|-------------------------------------|----------------------------------|
| <i>President</i> —Edythe Farnum     | <i>Treasurer</i> —Elizabeth Hert |
| <i>Vice-President</i> —Lucile Baird | <i>Secretary</i> —Anna Ballarian |
- OCT. 19—Ship's company amused by "A Little Fowl Play" in assembly.
- OCT. 21—East High left Monroe Cross Country team in cold (51 - 18).
- OCT. 22—Monroe High golfers annexed inter-high golf championship. Our driving force consisted of Dean, Chantrueil, Connolly, Sears and Coach Schnider. Dean also added to his laurels the inter-scholastic title.  
                     Soccer team finished third. We may soon expect Monroe's sailors to be called the "Big Red" team.
- NOV. 1—Ship's chronicle Monroe Life changes policy. We shall now have news twice a month.
- NOV. 2—Hi-Y officers, President, Frank Bowie; Vice-President, Jack Kimble; Secretary, Ed. Russell; Treasurer, Dick Henderson.
- NOV. 18—Senior Play, "It Pays to Advertise," presented. The cast: Marguerite Weiner, Jack Kimble, Lucile Brewer, Frank Bowie, Carl Paul, Charles Hunt, William Agnew, Belle Weiss, Sidney Feyder, Dorothy Smith, Art Sergeant, Ted Haidt. Of course Miss English directed it. Did we forget to say it was a success?
- DEC. 7—Another hectic Senior Class meeting. Gift committee: Brewer, Weiner, Bowie, Kimble.  
                     Mock court in assembly created much merriment.
- DEC. 21—"Vanishing Princess" hit of assembly programs. Alumni dance held. All traditions shattered when it lasted until 11:30 (maybe the clock was wrong). Fine dance. Punch n' everything.

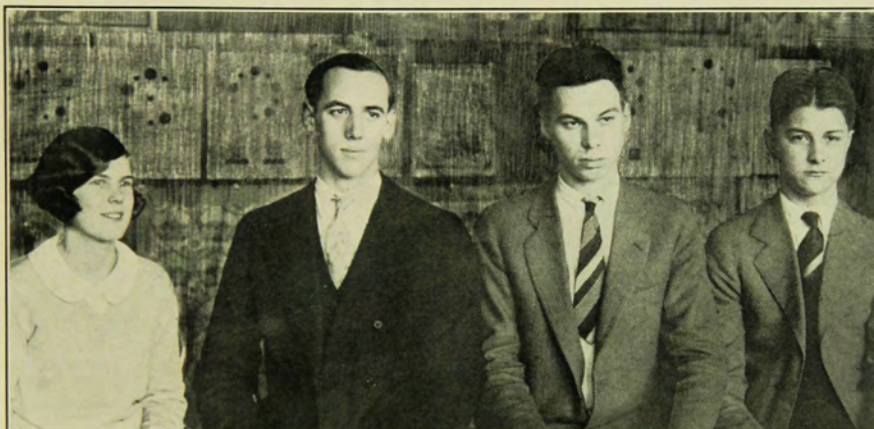


Senior Log—CONTINUED

— 1928 —

- JAN. 3—Back to school. After vacation blues.
- JAN. 4—Students accept revised constitution. Election of officers changed.
- JAN. 6—Monroe Sharks nosed out by West High (32 - 27). Levinson, Flanders show up well for Monroe.
- JAN. 13—Senior Day — 'nuff said!!!
- JAN. 16—Regents -----ouch!
- JAN. 24—Graduation — at last.
- FEB. 1—June gobs left to scrub decks alone after desertion of January sailors. Remnants of January class who return to ship for advanced seamanship courses are assigned to stateroom 123, under supervision of Stewardess Hunt.
- FEB. 5—Five gobs injured in the rush to attend inter-class dance held in the main ball room.
- FEB. 14—Grease, that might have been better used to lubricate ship's engines is spattered on candidates in assembly when nominations for ship's officers are made. Nominees for Admiral are: Russell and Ely; for Vice-Admiral, Howland, Ozer and Townsend; for Log Keeper, Travers, Williams, Hall and Dean.
- FEB. 16—After two days of lubricating candidates, Edwin Russell named Admiral, Arden Howland, Vice-Admiral, and Robert Travers, Log Keeper. Grease is scraped off decks and used in engine room.
- FEB. 18—Robert Travers chosen Editor-in-Chief of Senior Annual. Other members of annual board are: Ely, Williams, Smith, Kelley, Baird, Bradley, Ozer, Townsend, Sears, Marks, Kaplan, Farnham, Gallagher.
- FEB. 21—Charlotte Scrub basketballers hide their heads in shame as Monroe tidal wave sweeps over them, leaving them stranded, 60 - 12.
- FEB. 22—Monroe chorusers chant patriotic ditties at Celebration in Eastman Theatre under direction of Guy L. Hague.
- FEB. 24—Ship nearly swamped by hundreds of land lubbers who come aboard to see senior sailors present "Captain Applejack." Monroe gobs paint their faces and appear before footlights as pirates. Russell, Kayser, Goldstein and Sims take stellar roles, supported by Winans, Baird, Bahringer, Palmer, Linscott, Schick and Townsend. Miss Winona English directs play. Cheers for performers that echoes through ship at completion of drama woke up engineers in bowels of the ship.
- FEB. 28—East High pirates sink Monroe's first team basketball championship barge, 29 - 19.
- MAR. 1—Monroe swimmers kick East High fin slappers in face as they float by, 31 - 19. Levinson, Button, Haas, Haidt, Beyland, Flanders, Bradstreet, and Playford star for home ship.
- MAR. 8—Reserve basketball team downs West five, 26 - 25, and brings home first place in Interscholastic basketball league.
- MAR. 16—Monroe mermen down Manlius kickers in home waters, 27 - 19.
- MAR. 30—Ships chronicle takes 3rd prize at Columbia Interscholastic Press Association contest. Editors who issued prize winning chronicles are Robert Travers and Stanley Townsend.
- APRIL 1—Ship's hospital is filled with sailors who have broken toes.
- APRIL 4—President Howland calls meeting of Senior Sailors to regulate graduation activities. Wallace Ely given charge of Senior Day doings.
- APRIL 15—Twenty picked sailors band together and form first literary organization in history of ship, "Pencil Pushers." Robert Travers elected to pace bridge and Margaret Williams collects minutes. Charter members are: Kayser, Winnans, Townsend, Hahn, Baird, Farnham, Grouse, Goldstein, Russell, Howland, Ozer, Ely, Tallmadge, Whipple, Sprague, Bradley, Schick, Lockwood, Kaplan. Charles W. Carver, faculty advisor, steadies first rush of eager oarsmen.
- APRIL 16—Seniors again band together in ship's hold to discuss class activities. Sailors decide to spend senior day aboard ship, in the presentation of a play in morning and a banquet and dancing in the evening. Sailor Howland, presides at skull session.
- APRIL 19—Decks almost swamped as crowds attend inter-class dance. Chris Schick is in charge, and reports actual profit of six dollars.
- MAY 4—Monroe baseballers meet West in first league game of season. Captain Caldwell breaks bat on first offering of West High hurler.
- MAY 29—Officers of good ship Monroe "Tame the Shrew" in two nightly performances. George S. Carhart, Emily Beebe, Charles H. Carver and Lucile Hunt star.
- JUNE 13—Many sailors attacked with violent fits of sea sickness as Regents examinations are fed them for breakfast, dinner and supper.
- JUNE 20—Sick sailors quickly recover from sickness as exams end.
- JUNE 24—Sailors who fail to recover from acute sickness caused by examinations are left behind by ship to catch up in next vessel.
- JUNE 26—Senior sailors at last bid good-bye to the halls of Monroe, and swim out into the world; beacon of Monroe guides them onward, through the mist.
- So endeth the chronicles of the Class of 1928, of Monroe High School.





*Senior Class Officers*

*June 1928*

- ARDEN HOWLAND . . . . . *President*
- WALLACE ELY . . . . . *Vice-President*
- DOROTHY HALL . . . . . *Secretary*
- ROBERT TRAVERS . . . . . *Treasurer*



HENRY K. ADAMS 3 North Goodman Street  
"PETE"

*His handsome looks and languid way make many friends.*

French Play, Senior Play.  
No. 23 School Mass. Institute of Technology

*Pete Adams*

CORINNE E. BAHRINGER 1 Bly Street  
"COIE"

*Consistency, thou art a jewel.*

Girl's Glee Club (2, 3, 4), Gregg Transcription Certificate,  
Mixed Chorus (2, 4), National Honor Society, Senior Play,  
Assembly Programs, Underwood Typewriting Award,  
Pageant (2), Homeroom Athletics.  
No. 24 School Plattsburg Normal

*Corinne Bahringer*

L. LUCILE BAIRD 240 Collingwood Drive  
*Learning is a wealth.*

Glee Club, Senior Play, M-Y Club (3, 4), Homeroom Presi-  
dent, MONROLOG Staff, Mixed Chorus (4), Monroe Life  
Staff (3, 4), National Honor Society (4), Pencil Pusher (4).  
Oil City, Pennsylvania University of Rochester

*Lucile*

*Anna Ballarian*  
ANNA BALLARIAN 42 Oakdale Drive  
"ANNA"

*A steady worker produces fine goods.*

Glee Club (2, 3, 4), Pageant (2, 3), Class Officer (1), M-Y  
Club (3, 4), Secretary M-Y Club (4), Mixed Chorus (2, 4),  
Assembly Programs (2, 4), Homeroom Athletics (2, 3),  
Tennis Club (4).  
No. 23 School Syracuse University

ELLEN J. BANEY 83 Asbury Street  
"JU JU"

*Her smile, her speech, her winning way,  
Cheer us all from day to day.*

Shorthand Award (80 words) (3).  
Lockport Intermediate Undecided

N. LOIS BILLS 104 Shepard Street  
*I am here but few know it.*  
Louisville, Ky. University of Rochester

*Lois Bills*



HARRY J. BRADLEY 32 Nelson Street

"BRAD"

*A rare compound of frolic and fun,  
Who relishes a joke and delights in a pun.*

Cheer Leader (4), Art Editor Annual Staff, Hi-Y Club (4),  
Boy's Stunt Chairman, Senior Day, Stage Manager French  
Play, Pencil Pushers (4).

No. 15 School Cornell

HILDA A. BUMPUS 21 Arnold Park

"HILDA"

*An ounce of wisdom is worth a pound of wit.*

French Play (3, 4), National Honor Society (4), Assembly  
Programs (4).

Columbia Preparatory Wellesley

ELMER J. BUSHNELL 177 Berkley Street

"BUSH"

*A printer bold  
So we are told.*

Baseball (2), Reserve Baseball (3, 4), Reserve Basketball  
(3), Swimming (3), Mixed Chorus (4), Glee Club (4),  
Homeroom Athletics, Assembly Programs, Tennis (4).

No. 23 School Undecided

LUCIUS L. BUTTON 265 Alexander Street

*Best of luck*

*Bud's actions may be slow  
But if tricks his way you would blow  
He keeps his wits about him so  
He'll come out on top and you below.*

*to  
mon cher  
Pierrotte*

Homeroom Athletics, Assembly Programs, Swimming (4).

No. 23 School Undecided

LEONARD CALDWELL 145 Berkeley Street

"LEN"

*If horses did talk and cats did moo  
Or goldfish walked and oceans flew  
Then Caldwell his homework might do.*

Washington Day Pageant (2), Reserve Basketball (2),  
Basketball (3, 4), Baseball (2, 3, 4), Captain Baseball (3, 4),  
Soccer (2, 3, 4), Captain Soccer (3), Assembly Programs  
(2, 3, 4).

No. 23 School Springfield

WENDELL M. CALDWELL 6 Upton Park

"WENNEW"

*I'll betcha ten to one  
He knows music by the ton.*

Assistant Business Manager Senior Play, Band (2, 3, 4),  
Orchestra (2).

No. 12 School Undecided





*"Vic" Chambers.*



*"Chet" \$04*

VICTOR S. CHAMBERS                      Clover Street, Brighton  
 "ICK"  
*No friendly heart unfriendly deeds will do.*  
 French Play, Business Staff Senior Play.  
 Allen's Creek No. 6                      Undecided

CHESTER ROY CLARK                      Henrietta, N. Y.  
 "CHET"  
*Men of few words are the best of men.*  
 Basketball (4), Assembly Programs.  
 Henrietta Union                      Cornell

DOROTHY CLARKE                      181 Mt. Hope Avenue  
 "DOT"  
*A Dot with much dash.*  
 Glee Club, Pageant, Mixed Chorus, Band, Orchestra,  
 Certificates (Typewriting, Shorthand), Assembly Programs,  
 Commencement Exercises.  
 No. 13 School                      R. B. I.

ELON H. CLARK                      240 Meigs Street  
 "E"  
*A father once said to his son,  
 "The next time you make up a pun  
 Go out in the yard,  
 And kick yourself hard,  
 And I will begin when you done!"*

Senior Play, Hi-Y, The Romancers (4), Baseball (2),  
 Wrestling (2, 3), Cheer Leader (2, 3), Tennis Team (2),  
 Homeroom Athletics (2, 3, 4), Senior Day Committee,  
 Student Council (2).  
 No. 15 School                      Mechanics Institute

JAMES CLARK                      55 Sycamore Street  
 "JIM"  
*Though he's handsome he scorns to flit  
 On the wings of borrowed wit.*

Glee Club, Reserve Basketball (2), Reserve Baseball (3),  
 Soccer (3), Manager Track Team (2), Homeroom Athletics,  
 Hi-Y (4), Assembly Programs.  
 No. 15 School                      West Point

JAMES THOMAS CONNOLLY                      929 Meigs Street  
 "JIMMY"  
*Our golf player Jim,  
 Can drive well toward the pin.*

Glee Club (3), Homeroom Athletics (2, 3, 4), Golf Team  
 (4), Assistant Advertising Manager Senior Play, Com-  
 mencement Exercises, Assembly Programs.  
 Blessed Sacrament                      Undecided

1928



*Mom meilleur souvenir 178*  
*178 Jaywards*  
*30 Amours!*  
*"Cooney"*

DOROTHY ADELE COONEY 70 Ferndale Crescent  
"DOT" *"Cooney"*

*Music has charms alone for peaceful minds.*

Glee Club (2, 3, 4), Pageant, M-Y, Homeroom Athletics,  
Mixed Chorus (4), Orchestra (2, 3, 4), Song Chairman  
(Senior Day Banquet), Commencement Exercises, Assem-  
bly Programs, Octette.  
City Normal Eastman School of Music



DOROTHY CROMWELL 32 Castlebar Road  
"DOIE" *"Doie"*  
*P.E. 13*

*When a woman has no answer, the sea is empty of waves.*

Glee Club (2, 3), Homeroom Athletics.  
No. 23 School R. B. I.



HARRIET CURTIS 50 Richmond Street  
"BABE" *"Babe"*  
*True as a dial to the sun*

Homeroom Athletics (2, 3), Mixed Chorus, Certificates—  
60 Word Shorthand, 80 Word Shorthand, O.G.A., 40 Word  
Typewriting, Royal Silver Pin, 45 Words.  
City Normal Undecided



THELMA JEANNE DANIELS 48 Hamilton Street  
"THEL"  
*Out through thine eyes doth shine  
A heart of gold.*

Glee Club, Pageant, Mixed Chorus, Commencement  
Exercises, Assembly Programs.  
No. 13 School Undecided



INSCHO WILLIAM DEAN 380 Barrington Street  
"BILL"  
*Bill Dean is our golfing shark,  
With basketball, too, he makes his mark.*

President Golf Club, Captain Golf Team, Basketball Team  
(3, 4), Golf (3, 4), Homeroom Athletics (4), Hi-Y (4).  
Lyons Union Pennsylvania Union



LOTTIE DE COLESTA 175 Alexander Street  
"LOT"  
*She's quiet and busy,  
This dark headed missy.*

No. 15 School Rochester Dental



*Best Wishes to My Friend "Ted"*







HELEN DILDINE 1058 Harvard Street  
"PICKLES"

*A prudent woman is in the same class of honor as a wise man.*  
Glee Club (2, 3, 4), M-Y (4), Homeroom Athletics, Mixed Chorus (4).  
No. 1 School University of Rochester

DOROTHY V. DWORSKI 851 Harvard Street  
"DOT"

*We know her by her wilful air,  
Her dancing eyes, her jet black hair.*  
Glee Club (2, 3, 4), Pageant (2), Homeroom Athletics (4), Mixed Chorus (4), Operetta, Assembly Programs (4).  
No. 14 School Simmons

MELVA EATON 358 Mulberry Street  
"MEL"

*A fool might try to convince her;  
But only a wise man could persuade her.*  
Girls' Glee Club (2, 3, 4), Mixed Chorus (4), Homeroom Athletics (2), Pageants (2).  
No. 24 School R. B. I.

WALLACE ELY 344 Barrington Street  
"WALLY"

*Ely may be a little name  
But remember the oak tree's fame.*  
President Hi-Y (2), General Chairman Senior Day, Assistant Editor Annual Staff, French Play (4), President Class (2), Vice-President Class (4), Pencil Pusher (4).  
No. 23 School Princeton University

ISABELLE ERDLE 876 South Avenue  
"IZZY"

*Everyone knows in all these parts,  
That this fine girl has won our hearts.*  
Assembly Programs (4), Homeroom Athletics (4).  
Kingston, Pennsylvania Undecided

ROBERT FANCY 144 1/2 Alexander Street  
"BOB"

*A clever boy in many a way  
He has one limitation:—  
Just hang around and hear some day  
His French pronunciation.*  
Glee Clubs (2, 3, 4), Senior Play Business Staff, Cross-Country (4), Mixed Chorus (2, 3, 4), Track (4).  
Madisonville, Ohio University of Illinois



EDYTHE MARION FARNHAM 1043 Park Avenue

"EDDIE"

*She can dance, she can play  
She can act, she can sing  
One might truthfully say  
Eddie can do anything.* "Eddie"

M-Y (3, 4), President M-Y (4), Girls' Glee Club (4), Mixed Chorus (4), French Play (3, 4), MONROLOG Staff, Member Student's Council, Senior Day Committee, Assembly Programs, Pencil Pusher (4).

No. 15 School Syracuse University

GERALD FINK "FINK" 80 Savannah Street

*"Fink"  
There is a young fellow named Fink,  
The violin he plays on the blink,  
It sings and it cries  
And so sadly it sighs  
His playing will make your heart sink.*

Orchestra (3, 4), Mixed Chorus (2), Glee Club (2), Senior Play Assembly Programs.

No. 12 School Undecided

ARTHUR FISHBERG "ART" 85 Delevan Street

*Art, like all of us, is occasionally endowed with wisdom.*

Sophomore Basketball, Reserve Basketball (3, 4), Basketball (4), Captain Reserve Basketball (4), Manager Soccer (4), Homeroom Athletics, Reserve Baseball (3), Assembly Programs, Mixed Chorus, Senior High Boys' Athletic Representative (4), Senior Day Activities, Reserve Baseball (4).

No. 14 School Albany College of Pharmacy

BEATRICE FITZGERALD "BE" 41 Ontario Street

*Let all trouble, work and sorrow,  
Hide itself until tomorrow.* "Be"

Business Staff, French Play (4), Reserve (Girls) Basketball (2), Homeroom Athletics (2, 3, 4), Mixed Chorus (2).

No. 14 School University of Rochester

HOWARD E. FRANK "HOWIE" 277 Hamilton Street

*"Howey" is the best of boys  
And never loses his poise.*

Homeroom Athletics.

No. 13 School R. B. I.

CARRIE FRASIER "SCOTCHY" 86 Meigs Street

*Mirth rules the day,  
Dull care, Carrie, away.*

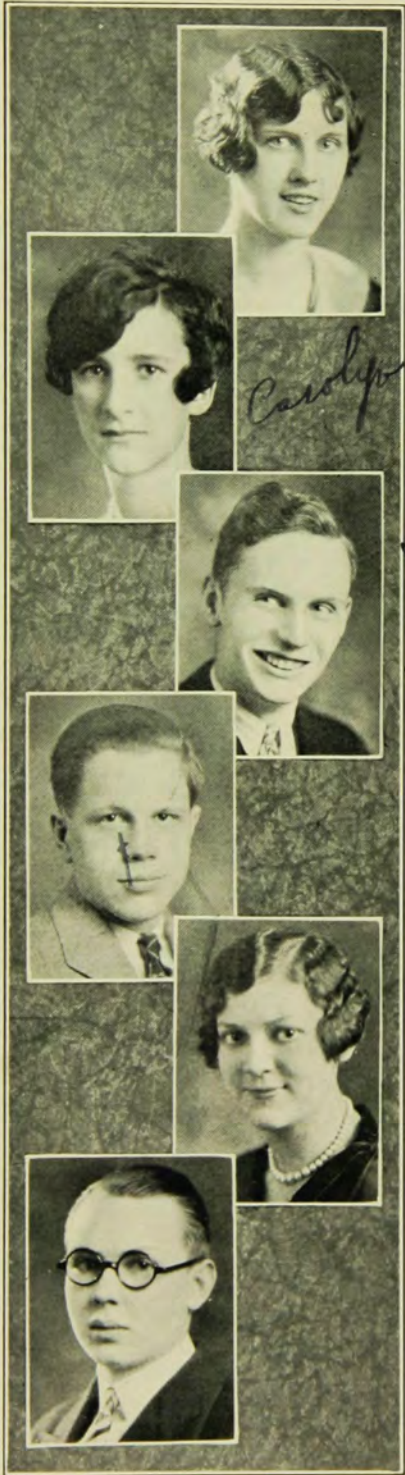
Homeroom Athletics (3), Shorthand Certificate 60 Words, O.G.A.

No. 15 School Undecided





*"Jerry" Fritz*



*Carolyn*

*Charles W. Gallagher*

GERALDINE M. FRITZ

31 Washburn Park

"JERRY"

*Some birds warble in the springtime,  
Others sing in the fall,  
Although her songs are like a bird's,  
The seasons matter not at all.*

Girls' Glee Club (2, 3, 4), Mixed Chorus (3, 4), Special Chorus Octette, Assembly Programs.  
No. 24 School City Normal

CAROLYN E. GALE

42 Harlem Street

"LYNN"

*Laugh and the world laughs with you  
Kick and you kick alone  
For your cheerful grin will let you in  
Where the kicker is unknown.*

Homeroom Athletics, Basketball Team.  
No. 23 School City Normal

CHARLES W. GALLAGHER

11 Vick Park A

*A conscientious man,  
Whose heart is in his work.*

Soccer (2, 3), Reserve Soccer (4), Track (2), MONROLOG Staff (4), Monroe Life Staff (2), Assistant Manager (3), Baseball Assistant Manager, Basketball (4), Captain Homeroom Athletics (2, 3).  
No. 15 School Work

MAURICE GIBBS

206 Hurstbourne Road

"MAURIE"

*Maurice leads a life of pleasure free;  
A happy-go-lucky boy is he.*

French Play (4), Homeroom Athletics (2, 3), Assembly Programs (2, 3).  
No. 16 School Undecided

RUTH IVA GIBBONS

124 Meigs Street

"RUFUS"

*Good cheer, a lot of fun,  
And a smile for everyone.*

Pageant (2), Glee Club (2, 3, 4), Mixed Chorus (2, 3, 4), Chorus, Special Chorus, Assembly Programs, Girls' Octette, Mixed Quartette.  
No. 15 School Undecided

WILLIAM O. GIBBONS

247 Meigs Street

"BILL"

*Be silent and pass for a philosopher.*

Assembly Programs.  
Out-of-Town Undecided



MORTON A. GOLDBERG 1190 Park Avenue

"MORT"

*Some do sow and some do reap,  
But I am sleepy, so let me sleep.*

Manager Tennis Team (3), Monroe Life Staff (3, 4), Home-  
room Athletics (2, 4), Assembly Program (3, 4).  
No. 23 School New York University

CHARLES IRWIN GOLDSTEIN 316 Berkeley Street

"CHUCK"

*Charlie Goldstein, the perfect clown,  
He should wear the jester's crown.*

Senior Play (4), Reserve Baseball (2), Mixed Chorus (2),  
Homeroom Athletics (2, 3, 4), Monroe Life Staff (2, 3),  
Assembly Programs, Manager Track Team.  
No. 23 School Undecided

J. RICHARD GOLDSTEIN 44 Faraday Street

"DICK"

*Fierce, gruff, rough, noisy, bang!  
Here comes a big important man, wang!*

Boy's Glee Club (4), Mixed Chorus (4), Homeroom Ath-  
letics (3), Homeroom President (3), Chorus (4), Senior  
Play, Student's Council (3), Assembly Programs (2, 3, 4),  
Pencil Pusher (4).  
No. 23 School University of Rochester

JANE CAROLYN GROUSE 84 Edgerton Street

*Jane Grouse, a quiet lass,  
Never makes much noise in class;  
Yet when she's called on to recite  
Her answer usually is right.*

Girls' Glee Club (2, 3, 4), Mixed Chorus (4), M-Y (4),  
MONROLOG Staff (Asst. Editor), Monroe Life Staff (3, 4),  
National Honor Society, Pencil Pusher (4).  
No. 23 School University of Rochester

MARGARET E. GROVER East Avenue and Landing Road

"MARG"

*She is a girl with big brown eyes  
Who says very little, but is very wise.*

Glee Club (4), Assembly Programs (4), Mixed Chorus (4).  
Livonia High Undecided

KATRYN L. GUTLAND 405 Beach Avenue

"KAY"

*Kitty's laugh and Kitty's smile,  
Kitty's "je ne sais quoi" style  
And her fun so full of pep  
Altogether make her rep.*

Glee Club (2, 4), M-Y, Swimming Team (2), Mixed Chorus  
(4), Assembly Programs (3, 4), Operetta (2).  
No. 15 School Undecided







*George C. Hahn*  
1928

FRANCENE HULBURD 209 S. Goodman Street

*Franc*  
She's witty and pretty  
We like her a lot  
Lazy and peplless  
I'll say she's not.

No. 24 School Undecided

GEORGE C. HAHN 150 Monroe Avenue  
"BUD"

George is sure and once begun,  
He'll work until his task is done.

Business Manager Senior Play, Swimming Team (3), Assistant Manager Swimming (3), Manager Wrestling (4), Hi-Y (3, 4), Treasurer Hi-Y (4), MONROLOG Staff, Photographic Editor (4), Homeroom Athletics (2, 3, 4), Assembly Programs (4), Golf Tournament (3, 4), Pencil Pusher (4).  
No. 12 School Rensselaer Poly. Tech. Institute

DOROTHY JEAN HALL 142 Mulberry Street  
"DOT"

*Dot*  
If assistance you are looking for  
Don't turn around and stare  
Just look a bit about you  
You'll see Dorothy standing there.

French Play (4), Glee Club (2, 3), Pageant (2), Class Secretary (4), Homeroom Athletics (2), Member Student's Council (4), Senior Day Committee, National Honor Society, Assembly Programs, Secretary Student's Association (4).  
No. 24 School Albany State

ROBERT M. HARRIS 431 Monroe Avenue  
"BOB"

*Robert Harris*  
Deep rivers more in silence.

Hi-Y (4), Assembly Programs, Homeroom Athletics.  
No. 15 School University of Rochester

DOROTHY HARVIE 3 Rundel Park  
"DOT"

*Dot*  
Fair of hair and fair of face  
Every more a more of grace.

Glee Club (2), Tennis Club (4).  
No. 23 School Undecided

ELSA MARIE HAWKINS 154 Nunda Boulevard  
"L"

*So pretty*  
*Everyone*  
*Elsa Marie*

Sweet in laughter, gentle in speech  
Everyone says she is just a peach.

New this year from Clinton High, New York City.  
New York City Undecided



*One we pickled?  
The heart @ wishes, P. J.  
P. J.*

ELIZABETH J. HERT 170 Westminster Road

"BETTY"

*With gesture great and sweetest voice  
With rolling eyes and laughing choice  
With presence grand and lily soul  
Behold Elizabeth as a whole.*

French Play (4), Girl's Glee Club, Pageant, M-Y Officer, Basketball, Homeroom Athletics, Homeroom President, Mixed Chorus, Special Chorus, Operetta.  
No. 23 School Vassar

ARDEN COLE HOWLAND 268 Rockingham Street

"ARD"

*His limbs are cast in manly mold,  
For hardy sports and conquests bold  
Nor is that all that he can do  
Our dreams of him will all come true.*

French Play (4), Class President (4), Senior Play (4), Basketball (2, 3, 4), Soccer (2, 3, 4), Baseball (2, 3, 4), Swimming (2), Hi-Y (2, 3, 4), Homeroom President (2, 3), Mixed Chorus (2), President Student's Association (4), Vice-President Student's Association (4), Athletic Rep. (3), National Honor Society, "O Hara San" (2), President Marshals (2), Male Quartette (2, 3), Mixed Quartette (3), President Hi-Y (3), Pencil Pusher (4).  
No. 24 School Cornell

MARCIA MARY IMRAY 1730 Highland Avenue

"DINK"

*Wishing you  
the best of  
luck*

*Marcia asked me not to say  
Anything to give her way  
So there is nothing left to tell  
Of Marcia, whom we like so well.*

Chicago, Ill. Undecided

SAZELLA INDOVINA 108 Weld Street

*Who's pretty, witty, kind, and dear,  
And always has a smile to cheer.*

Glee Club, Homeroom Athletics, Assembly Programs.  
No. 14 School University of Rochester

RUTH IRONS 5 Raymond Street

"RUTH"

*I live for those who love me and the good that I can do.*

Treasurer of Class (2), Class Social Chairman (2), Secretary Homeroom (3), Assembly Programs, Shorthand Certificates (60 and 80 Word).  
No. 15 School Undecided

ANTOINETTE JANSEN 678 Meigs Street

"ANNE"

*These girls with so much reserve give us a good background.*  
No. 24 School Undecided



*Best wishes, P. J. G. J.  
Arden*

*Marcia  
Imray*

*Sazella*

*Ruth Irons*





*Hyman Julius Kaplan*  
"JULIUS"

HYMAN JULIUS KAPLAN 21 Culver Road

*Of work, Hymie wants a lion's share,  
To say, he's a perfect gentleman, I dare.*

French Play, Glee Club, MONROLOG Staff, Mixed Chorus,  
Chorus, Monroe Life Staff (Exchange Editor), Orchestra  
String Quartette, Pencil Pusher (4).

No. 23 School University of Rochester

J. SIDNEY KASINER 179 Crawford Street

"SID"

*Good or bad, you do not know?  
Guess good,—a little birdie told me so.*

Band (2, 3, 4), Orchestra (2, 3, 4), Typewriting Award,  
Swimming (2), Homeroom Athletics.

No. 24 School Business

MARIE A. KAYSER 897 Clinton Avenue S.

"RE"

*Such a bright little  
Slight little  
Light little  
Trim little — lass.*

Homeroom Athletics, Senior Play, Shorthand Certificate,  
Assembly Programs, Mixed Chorus, Glee Club (2), Pag-  
eant, Pencil Pusher (4).

No. 24 School Mechanics Institute

MARY E. KELLY 29 Gold Street

"KELLY"

*It's wiser being good than bad.  
It's safer being meek than fierce,  
It's better being sane than mad.*

M-Y (3, 4), MONROLOG Staff (4), Honorable Mention, Ameri-  
can Chemical Prize Essay Contest (3), National Honor  
Society (4), Business Staff Senior Play.

No. 13 School University of Rochester

REGINA E. LANDOW 69 Culver Road

"REGGIE"

*A swimmer of great merit.*

Glee Club (2), M-Y, Tennis Club (4).

No. 23 School Undecided

RUTH E. KOEHLER 491 Hawley Street

"BABE"

*If these girls weren't so good, it would be easier  
to write grinds for them.*

Mixed Chorus (2), Typewriting Award, Gregg Transcrip-  
tion Award (4).

No. 13 School Undecided

*Marie*

*Mary Kelly*

*Regina Landow*



ELSIE L. LANGLEY 1420 Clinton Avenue S.

"ELSIE"

*Grace should be her middle name.*

Homeroom Athletics, Reserve Basketball, Marshall, Class Basketball, Girl Reserve, Underwood Typewriting and Shorthand Award, O.G.A.

Dist. No. 8 Post Graduate

HAROLD LAUTERBACH 236 Sanford Street

"LAUDY"

*Of their own merits, modest men are dumb.*

Homeroom Athletics (2, 3), Track (4).

No. 13 School R. B. I.

MARGUERITE M. LENT-KOOP 445 Rockingham Street

"MARGE"

*She is always happy and gay,  
And wonders why others can't be that way.*

Basketball (2, 3), Captain Basketball (3), Royal Award (39 Words) (2), Underwood Award (42 Words) (3), Gregg Shorthand (60 and 80 Words) (4), President Monroe Girl Reserves (4), Secretary Girl Reserves (3), Marshall (2, 3, 4), Captain Class Basketball (4).

No. 33 School Plattsburg Normal

BEATRICE HARRIET LEVIN 590 Harvard Street

"BEA"

*Pamela, on the stage—  
Was judged top notch by every sage.*

French Play (4), Custodian Flag, National Honor Society, Assembly Programs (2, 3, 4).

No. 23 School University of Rochester

HOWARD E. JANSOHN 138 Clinton Avenue N.

"HOWY"

*He mixes reason with pleasure  
And wisdom with mirth.*

Band (2, 3, 4), Orchestra (4), Senior Play, Inter-High Band and Orchestra, Assembly Programs (2, 3, 4).

No. 24 School University of Rochester

HARRIETTE MADDEN 83 Morrison Street

"PAT"

*Agreeable, and in every way a lady.*

Business Staff French Play (4), Class Secretary (2), Home-room Athletics (2), Assembly Programs (4).

No. 23 School University of Rochester







*Bill Marks*

WILLIAM M. MARKS

147 Vassar Street

"BILL"

*The inner side of every cloud is bright and shining  
He therefore turns his clouds about  
And always wears them inside out  
To show the lining.*

Pageant, Reserve Baseball (3), Homeroom Athletics (2, 3, 4), (Captain), Assembly Programs, Operetta (2), Mixed Chorus (2), Asst. Business Manager, MONROLOG.

No. 23 School

Cornell

GLADYS EDNA MERRICK

5 Utica Place

"JOE"

*We want to hear her voice, we know it will be golden.*

Glee Club (2, 3, 4), "O Hara San" (2), Pageant (2), Special Chorus (2, 3), Capt.-Mgr. Hit Pinball (2), Mixed Chorus (2, 3, 4), Girls' Octette (4), Girls' Quartette (3), Mixed Quartette (3), Assembly Programs (2, 3, 4), Commencement Exercises (4), Sang Two Solos at Chamber of Commerce (2).

City Normal

General Hospital

*Helen Jean Miller*

HELEN JEAN MILLER

12 Fair Oaks Avenue

"DOADY"

*Her face shows a sweet disposition.*

Orchestra (2, 3, 4), Glee Club (2), Operetta (2), Marshall (2, 3), Homeroom Athletics (2), Assembly Programs, Senior Day Committee.

No. 15 School

Eastman School of Music

HAROLD M. MOLL

247 Laburnum Crescent

*This boy is good, how do we know?  
He told us so, and he ought to know.*

Glee Clubs (2, 3), Mixed Chorus (3, 4), Assembly Programs, Pageant.

No. 23 School

Undecided

SOL MOSKOW

111 Park Avenue

"HOOKY"

*Absolute silence, not a sound  
Sol is spreading a story around.*

Homeroom Athletics (2, 3, 4), Basketball (2), Reserve Basketball (3, 4), Reserve Baseball (2, 3), Reserve Soccer (2, 3), Soccer (4), Manager Soccer (3), Track (3).

No. 15 School

University of Rochester

CHARLES OTT MUNSON

4 Portsmouth Terrace

*Charles Ott Munson*  
"CHUCK"

*This boy might be bad, but all we see  
Is just as good as good can be.*

Out-of-town.

No. 23 School

Undecided



DOROTHY LOUISE NORTHRUP 130 Asbury Street  
"DOT"

*So quiet and inconspicuous she causes no trouble.*

Asst. Wardrobe Mistress Senior Play (4), Underwood Bronze Pin (40 Words) (2), Royal Typewriting Silver Pin (45 Words) (2), Gregg Shorthand Certificate (60 and 80 Words) (2).

No. 15 School Undecided

MAURICE OZER 96 Kenilworth Terrace  
"ZU"

*Here's a boy, though he is small  
He never shirks his work at all,  
But always jumps in with a vim  
That brings him out with victory and a grin.*

Boy's Glee Club (2, 3, 4), Pageant, Senior Play, Monroe Annual Staff, Mixed Chorus (3, 4), Chorus (4), Monroe Life Staff (4), National Honor Society, Dist. Winner Oratorical Contest, Assembly Programs, Pencil Pusher.

No. 14 School University of Rochester

MARGARET W. PALMER Penfield Road, Brighton  
"PEGGY"

*Always happy, always nice—sure it's Peggy, no use guessing twice.*

Glee Club (2, 3, 4), Mixed Chorus (4), Pageant, M-Y, Homeroom Athletics (2, 3), Special Chorus, Operetta.

City Normal Undecided

ELEANOR L. PHETEPLACE 233 Culver Road  
"FAT"

*Eleanor: Who is she that is happy all day through,  
With pleasant things to say and pleasant things to do?*

Glee Club (2, 3, 4), Mixed Chorus (2, 3, 4), M-Y (3, 4), Assembly Programs (2, 4).

No. 23 School Eastman School of Music

PERRY O. POPP 38 Reliance Avenue  
"POP"

*Little known, but there just the same.*

Homeroom Athletics, Basketball (3), Industrial Glee Club.

No. 15 School Undecided

THOMAS PRICE 326 Barrington Street  
"TOM"

*When ice cream grows on macaroni trees,  
When Sahara's sands grow muddy,  
When cats and dogs wear overshoes—  
That's when I like to study.*

Hi-Y (4), Assembly Programs.

No. 23 School Antioch College



"Dot" Northrup  
Flourished



Maurice



Palmer  
Peggy



"Fat"  
PhetPLACE



"Tom"





LESTER H. RAPPAPORT 180 South Goodman Street  
"RAPPY"

*I would act a manly part  
Though I had ne'er a farthing,  
For without an honest heart  
No man is worth regarding.*

Senior Play, Homeroom Athletics, Orchestra (2), Assembly Programs, Debating Club.  
No. 23 School University of Rochester

GRAYDON ROBINSON 63 Hickory Street  
"ROB"

*His name has the sound of a gentleman.*

Homeroom Athletics, Glee Club, Homeroom President.  
No. 13 School Undecided

JEANETTE ROMAN 493 Monroe Avenue  
"JEAN"

*Jeanette can smile, Jeanette can pout;  
Jeanette is funny without a doubt.*

Assembly Programs, Homeroom Athletics.  
No. 15 School New York Fine and Applied Arts School

BETTYE A. ROSENTHAL 107 Edgerton Street  
"B"

*A girl with many good qualities.*

Glee Club (2), Two Shorthand Awards (3), Typewriting Award (2).  
No. 23 School Undecided

EDWIN F. RUSSELL 308 Laburnum Crescent  
"EDDIE"

*"Be Good!" says the proverb,  
"And happy you'll be."  
But fun, on the other hand,  
Satisfies me.*

Eddie

Reserve Basketball (4), Soccer (3, 3, 4), Track (2, 3, 4), Manager Basketball (4), Manager Wrestling (2), Tennis Team (2, 3), Business Manager (French Play (4), Pageant (2), Hi-Y Pres. (4), Social Chairman Class (3), Homeroom Pres. (2, 4), Monroe Life Staff (4), Pres. Student's Council (4), Senior Play (4), Band (2), Orchestra (2), Member Senior Day Committee (4), National Honor Society, Assembly Programs (2, 3, 4), Homeroom Athletics, Pencil Pusher (4).

No. 23 School University of Michigan

CHRISTIAN SEEL SCHICK 656 Averill Avenue  
"CHRIS"

*Sometimes Chris is in a daze  
But always his smile comes through the haze.*

Social Chairman Class (4), Senior Play (4), Homeroom Pres. (2, 4), Statistics Editor MONROLOG, Mixed Chorus (2), Band (2, 3, 4), Assembly, Programs (2, 3, 4), Hi-Y (4), Homeroom Athletics, Senior Day Program, Pencil Pusher (4).

No. 15 School Cornell

Chris  
Schick



EDWARD SCHOFIELD 158½ Park Avenue

"ED"

*A man whose wisdom is not wholly derived from instruction.*

New York City University of Rochester

JAMES SCONFETTI 383 Oxford Street

"JIM"

*Jim sure does like to mess  
Life with a few prankish tricks.*

Glee Club, Class Basketball, Homeroom Athletics, Assembly Programs, Commencement Exercises, Senior Day Program.

No. 23 School University of Rochester

ROBERT SEARS 41 Rutgers Street

"BOB"

*Bob Sears  
p89*

*Good of heart and good of hand  
Bob will help out any man.  
Still, he's never out of place  
So we class him as an ace.*

Vice-President Class (3), Senior Play, Reserve Basketball (4), Track Team, Skating Team, Golf Team, Homeroom Athletics, Homeroom President (4), MONROLOG Staff, Member Student's Council, Assembly Programs.

No. 23 School Hobart

CLARA SHER 13 Boardman Street

"CLARA"

*A good little girl with a little voice.*

Class Officer.

Erie, Pa. R. B. I.

HAROLD R. SECKER 357 Linden Street

*Small and unobserving—  
Of more than this he is deserving.*

Homeroom Athletics (3, 4), Two Shorthand Awards (3), Typewriting Award (2), Boy's Glee Club (2, 3), Mixed Chorus (2, 3), Asst. Manager Senior Play (4).

No. 24 School Undecided

ROBERT SIEBERT 710 Main Street East

"BOB"

*Bob is a giant strong  
And full of fun the whole day long.*

Soccer (2, 3, 4), Capt. Soccer (4), Wrestling (2, 3, 4), Capt. Wrestling (3), Track (3, 4), Cross Country (4), Baseball (2), Class Basketball (2), Homeroom Athletics (2, 3, 4), Tennis (4), Asst. Advertising Manager Senior Play, Mixed Chorus (4), Assembly Programs (4).

Nazareth Hall Notre Dame

*Bob Siebert @Σ;*







SELMA KATHRYNE SIMS

257 Park Avenue

"SAL"

*We'll all agree I guess  
Selma as an actress  
Shows some real fine classiness.*

Orchestra (2, 3, 4), Pageant (2), Monroe Life Staff (2),  
String Quartette (2), Operetta Orchestra (2), Homeroom  
Athletics (2, 3), Senior Play (4), Assembly Programs (3, 4).  
No. 23 School Albany State College

MADELINE E. SMITH

442 Caroline Street

"MADGE"

*Seeing only what is fair,  
Sipping only what is sweet.*

Homeroom Athletics (2, 3), Mixed Chorus (3), Gregg Tran-  
scription Award (3), O.G.A. (3).  
No. 24 School Undecided

OLIVE L. SMITH

401 Alphonse Street

"OLLEE"

*A silent woman is always admired.*

Glee Club (2, 3), MONOLOG Staff, Mixed Chorus (2), Mon-  
roe Life Staff (3, 4), Monroe Life Pin (3), Assembly Pro-  
grams, Marshall (2, 3, 4), Operetta (2).  
No. 13 School Undecided

MARION ANN SNYDER

71 Culver Road

"MARION"

*Marion is so petite and small  
She hardly can be found at all.  
You may look beneath a chair  
But find her atop, smiling there.*

M-Y (3, 4), Mixed Chorus (4), Glee Club (2, 4), Assembly  
Programs (2, 3, 4), Homeroom Athletics (2, 3).  
No. 23 School Wells College

BERTHA E. SPABER

549 South Goodman Street

"BIRDIE"

*We always find a use for these little girls.*

Glee Clubs (3, 4), Mixed Chorus (2, 3, 4), Chorus (2, 3, 4),  
Homeroom Athletics (3), Assembly Programs (2, 3, 4).  
No. 12 School Geneseo Normal

GRACE SPRINGSTED

26 Vick Park B

*Her strongest stand is on the field of play.*

Girl's Glee Club (2, 3, 4), Basketball (3), Mixed Chorus (4),  
Homeroom Athletics (2, 3, 4), M-Y (3, 4), Operetta (2).  
No. 15 School Syracuse



JOHN J. STANTON

174 Averill Avenue

"JOHNNIE"

*A man who thinks for himself, then does what he thinks.*

Stage Manager Pageant, Mixed Chorus, Wrestling (2, 3), Tennis (2), Homeroom President (2, 3, 4), Hi-Y, Homeroom Athletics, Assembly Programs, Senior Play, Stage Manager (2).

No. 13 School *Johnnie Stanton* Cornell  
*100-8*

IDALIE STROKIRK

69 Highland Parkway

*Her name, her face, her words-----exactly fit her actions.*

No. 23 School ~~Roch. Normal University of Rochester~~ *Corn. College*

STANLEY RUSSELL TOWNSEND

87 Culver Road

*Stan's calm, serene and cool  
Wandering through the halls in school  
With his lessons all prepared  
Guess he's never yet felt scared.*

French Play (4), Senior Play (4), Manager Swimming (3), Homeroom President (3, 4), Editor Monroe Life (4), President Monroe Chapter National Honor Society (4), Assembly Programs (4), Hi-Y, President Debating Club (2), Pencil Pusher (4).

No. 23 School University of Rochester

ROBERT J. TRAVERS

111 Inglewood Drive

"BOB"

*Keen of wit, at business good,  
Fond of sport, 'tis understood.*

Editor-in-Chief MONROLOG, Associate Editor, Monroe Life (3), Editor Monroe Life (4), Reserve Basketball (4), Homeroom Athletics (2, 3), Operetta (2), Glee Club (2, 3), Chorus (4), Class Treasurer, Secretary Students Assn. (4), Homeroom Pres. (3), Pencil Pushers (4), Pres. Pencil Pushers (4), Track (3, 4), Cross-Country (4), School Representative, National Oratorical Contest (3), Advertising Mgr. Senior Play, Senior Day Program, Hi-Y (4), Vice-President Hi-Y (4), Student Council (3, 4).

Boston, Mass. Antioch College

FRED TYRELL

204 Caroline Street

"FRED"

*A manly man.*

Electrician Senior Play, Homeroom Athletics, Glee Club.  
No. 24 School Mechanics Institute

EUGENE T. SULLIVAN

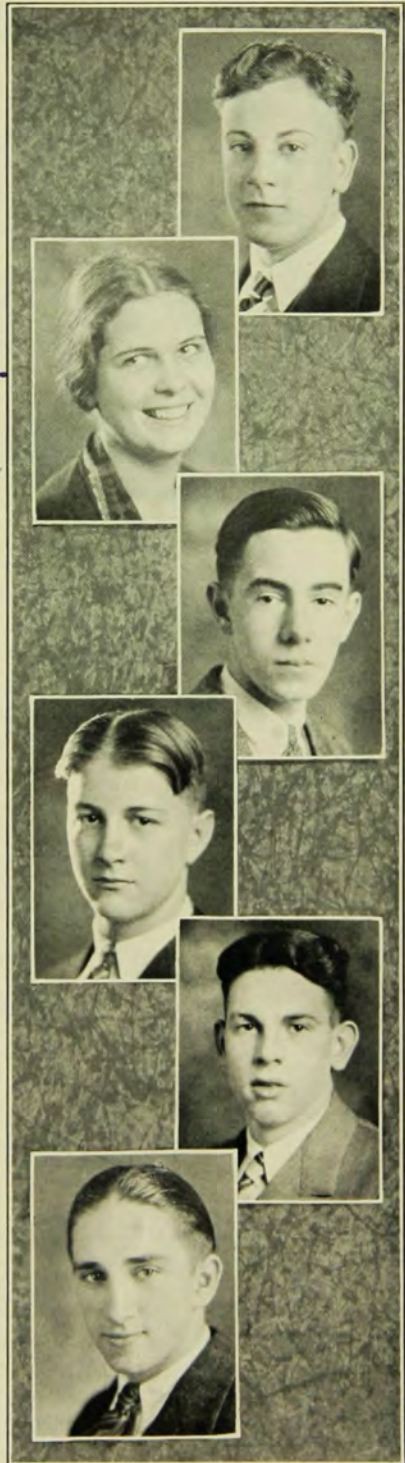
175 Field Street

"SULLY"

*Gene is too modest to show his good qualities but they bob up in spite of him.*

Baseball (2, 3, 4), Homeroom Athletics (2, 3, 4), Electrician Senior Play, Homeroom President Tennis (4).

Blessed Sacrament Undecided







*Ed Hallmridge  
Don't forget Signiant Boy  
and the vice a skunk!*

EDWARD H. TILMANTZ

1641 East Avenue

"ED"

*Ed in every class and play  
Shows us all that we, some day,  
Will be proud of him in a great big way.*

French Play (4), Senior Play, Track (3), Cross-Country (3, 4), Homeroom Athletics, Homeroom President (4), Business Mgr. MONROLOG (4), Monroe Life Staff (3), Standard Bearer, Vice-President Student's Council (4), Orchestra (3, 4), Senior Day Committee, "Vanishing Princess" (4), Hi-Y (4), National Honor Society (4), Student Council (3, 4), Pencil Pushers (4).

New England, North Dakota

Cornell

GLADYS I. TAYLOR

56 Sycamore Street

"TOM"

*G. Taylor*

*She has an abundance of wit  
But is very shy in using it.*

Two Shorthand Awards (3), Typewriting Award (2).

No. 24 School

R. B. I.

GRACE E. VANNEEL

6 Highland Heights

"PAT"

*True effort, and half the fight is won.*

Basketball (2, 3, 4), Mixed Chorus (4), Glee Club (2, 3, 4), Sodus High School Strong Memorial Hospital

LOIS MARGUERITE VOELKER

20 Brighton Street

"MIKEE"

*A helping spirit with a flippant air.*

Two Operettas, Glee Club (2, 3, 4), Mixed Chorus (2, 3, 4), Homeroom Athletics (2), Girl's Octette (4), Special Chorus (3, 4), Chorus (2, 3, 4), Commencement Exercises, Assembly Programs (2, 3, 4).

No. 15 School

University of Rochester

FRANCIS I. WARBURTON

976 Garson Avenue

"FRAN"

*Fran*  
ΩΣ

*Oh! Why was man born with such curls  
To tease and taunt the poor girls!*

Glee Club, Mixed Chorus, Band, Business Staff Senior Play.

No. 14 School

Undecided

JEAN D. WATKEYS

287 Dartmouth Street

"JEAN"

*Jean is capable without a doubt,  
As her trim dress and dignified manner point out.*

Glee Club (2, 3, 4), Pageant (2), Class Officers (3), Homeroom Athletics (2), Mixed Chorus (4), Monroe Life Staff (2), National Honor Society (4), Assembly Programs, Pencil Pusher (4).

No. 23 School

University of Rochester

*(M) (F) 5  
When we  
were "Chorus"  
girls!*

*"Jean"*

1928



GRACE WELSH 472 Glen Ellyn Way

*Retiring and kind  
Her like is hard to find.*

Girl's Glee Club (4), M-Y (3, 4), Homeroom Athletics (2, 3), Mixed Chorus (4), Assembly Programs (4).  
No. 23 School Normal School

*Grace Welsh N. S. 12.*

EVELYN ELIZABETH WHEELER 360 Canterbury Road

"EV"

*A cool head will take one far in this world.*

Girl's Glee Club (2, 3, 4), Mixed Chorus (4), Assembly Programs (2, 4), Homeroom Athletics (2), Pageant (2).  
No. 23 School Tufts College

*Evelyn*

MARION O. WHITBECK 1318 Mt. Hope Avenue

"MERDE"

*The very smile before you speak  
That dimples your transparent cheek  
Encircles all our hearts.*

M-Y Club.  
No. 13 School University of Rochester

MARGARET E. WILLIAMS 388 Monroe Avenue

"MARNEY"

*Marny is kidded, but in return  
A friendship, and how to smile we learn.*

Girl's Glee Club (2, 3, 4), M-Y (3, 4), Basketball (2, 3), Homeroom Athletics (2, 3, 4), MONROLOG Staff, Exchange Editor Monroe Life, Associate Editor Monroe Life, Chairman Mother's Tea, Monroe Life Staff (4), Student's Association, Pencil Pusher (4), Orchestra (2, 3, 4).  
No. 15 School Vassar College

RICHARD SUMNER WINANS 253 Alexander Street

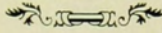
"DICK"

*He's going to be an actor  
On a highly novel plan,  
And all the boys and girls will say  
"Oh! What a leading man."*

Senior Play, MONROLOG Staff, Assembly Programs, Pencil Pusher (4).  
Out-of-Town University of Rochester

*Winans.*

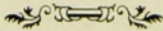




*Hello Red*  
 HOWARD IMRAY 1730 Highland Avenue  
 "BUD"  
*Bud Imray*  
 "I would guess this lad  
 The original arrow collar ad."  
 Reserve Basketball (4), Track (4), Hi-Y (4).  
 Chicago, Ill. Dartmouth

F. PETER MEYER 9 Sibley Place  
 "PETE"  
*A quiet fellow who attracts us by his likeable manner  
 as an unknown world attracts a little boy.*  
 Homeroom Athletics, Assembly Programs, Commence-  
 ment Exercises. M. I. T.  
 Corpus Christi

JOSEPH WARING 243 Alexander Street  
*We like him for his quiet manner  
 and his Southern drawl.*  
 Kentucky University of Kentucky





**In Memoriam**

MARGARET A. ROSS

CLASS OF JUNE 1928

## *Class Poem*

*Which way shall we look, Comrades,  
As we stand at the crossroads of Life?*

*Shall we look ahead and see our dreams  
Stretching like a winding road  
Leading over the Mountains  
To the Sea?*

*Or shall we look back and see  
In the Silvered Mirror, mellowed  
Visions of Childhood, and live again  
In dear Monroe?*

*Which way shall we look, Comrades?  
Both ways are golden.*

R. J. T.





# ORGANIZATIONS



### *Student Council*

*Fall Term*

ARDEN HOWLAND . . . . .  
EDGAR TALLMADGE . . . . .  
DOROTHY HALL . . . . .

**OFFICERS**

*President* . . . . .  
*Vice-President* . . . . .  
*Secretary* . . . . .

*Spring Term*

EDWIN RUSSELL  
ARDEN HOWLAND  
ROBERT TRAVERS

**MEMBERS**

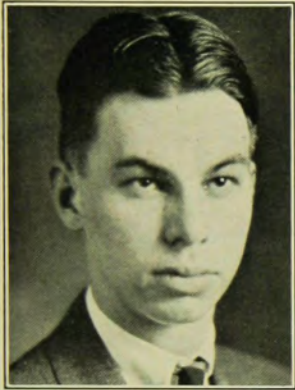
William Agnew  
George Leader  
Richard Longhouse  
Robert Marshall  
Russell Anderson  
Edwin Russell  
Marjorie Bushnell  
Charles Hellebush  
Florence Hoffman  
Janet Loysen  
Robert Travers

George Leader  
Richard Longhouse  
Lawrence Green  
Herbert Page  
Ruth Stackel  
Edythe Farnham  
Stanley Townsend  
Edgar Tallmadge  
Margaret Williams  
Arthur Fishberg

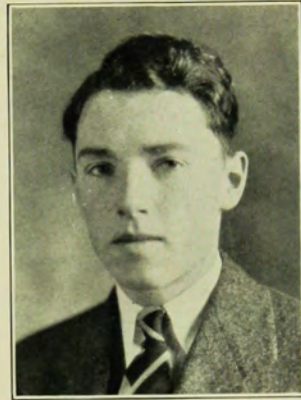
*Faculty Advisors*

William E. Hawley  
Dr. Charles H. Holzworth  
Walter J. Willis  
Jane C. Cameron





ARDEN HOWLAND



EDWIN RUSSELL

### *Student Government*

Monroe Student Government so ably instituted last year, has continued to uphold the high ideals of service that make it indispensable to the student body.

The Students' Executive Council, the governing body of the Monroe Students Association, spent the major part of the fall term in the revision and amendment of the constitution. For this work credit should be given to Arden Howland, the president, and his committee made up of Edgar Tallmadge, Wallace Ely, and Edwin Russell.

Edwin Russell, to whom had fallen the work of putting into operation the plan formulated by his predecessor, has made great strides in doing so with the assistance of the present council.

The help given by the faculty advisors is greatly appreciated by those students whose aim is a larger and more comprehensive student governing organization at Monroe.



## *Student Forum*

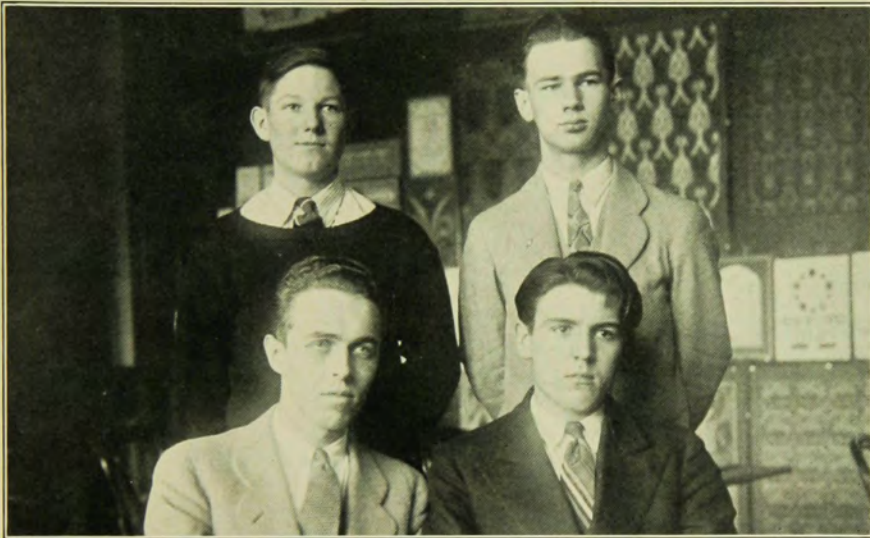
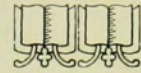
The Student Forum is the part of Student Government at Monroe that is representative of the entire school. Its members are the Presidents of every homeroom in the school.

Its principal function had been mainly as an advisory board. But since the approval of the new constitution it has been given more power. Committees whose duty is the regulation of school affairs are chosen from it. It is the hope of the Council that at some later time, when student government is better standardized, the Forum shall have an even more important function in School Government.





# CLASSES



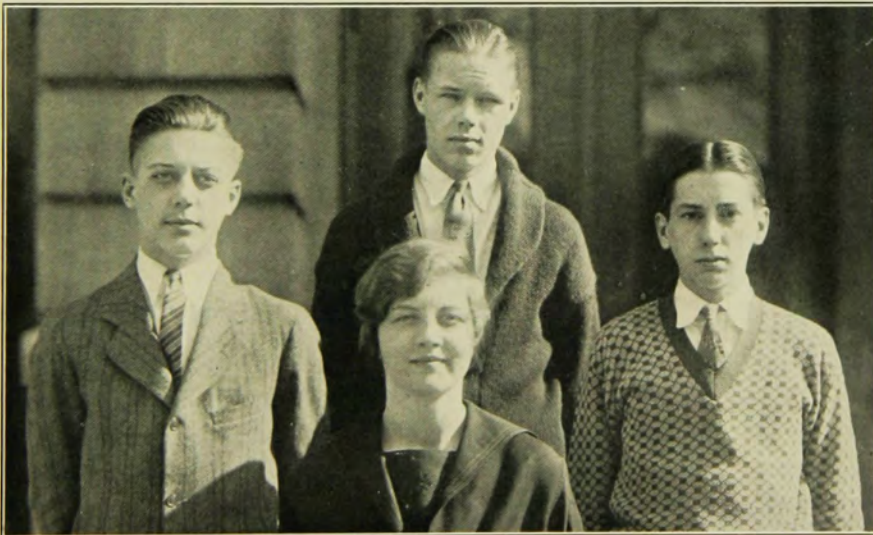
## *Junior Final Class*

RICHARD LONGHOUSE  
HIRAM NEUN

*President*  
*Vice-President*

JAMES THOMPSON  
ALAN McNABB

*Secretary-Treasurer*  
*Social Chairman*



## *Sophomore Final Class*

RUSSELL ANDERSON  
HERBERT PAGE

*President*  
*Vice-President*  
BETTY ANDREWS

FREDERICK ROHR  
ARTHUR GALE  
*Social Chairman*

*Secretary*  
*Treasurer*



## National Honor Society

### OFFICERS

STANLEY TOWNSEND  
JEAN WATKEYS

*President*  
*Secretary*

### MEMBERS

#### CLASS OF JUNE, 1927

Betty Backus  
Powell Beyland  
Lucile Cook  
Louise Davids  
Helen Greene

Edna Horsey  
Frederick Kates  
Ten Eyck Munson  
Ijain Renckert

Joseph Rippey  
Burnell Risley  
Louis Rodger  
Elizabeth Scheible  
Emily Wilsea

#### CLASS OF JANUARY, 1928

William Agnew  
Frank Bowie  
Lucile Brewer

Albert Burnett  
Sidney Feyder  
Jack Kimble

Carl Paul  
Edgar Present  
Carroll Wilson

#### CLASS OF JUNE, 1928

Lucile Baird  
Corinne Bahringer  
Hilda Bumpus  
Wallace Ely  
Maurice Ozer

Dorothy Hall  
Arden Howland  
Mary Kelly  
Beatrice Levin

Edwin Russell  
Edgar Tallmadge  
Stanley Townsend  
Jean Watkeys

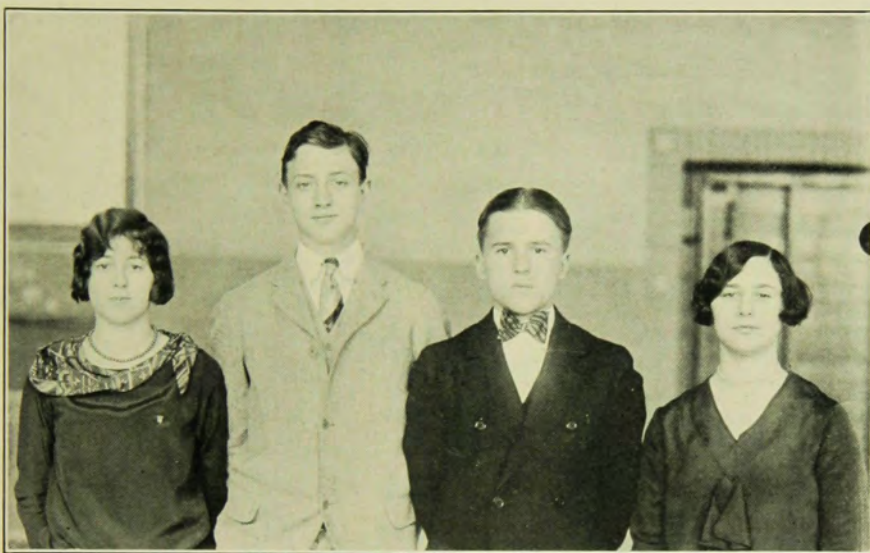
#### CLASS OF JANUARY, 1929

Ethel Anderson  
Jane Grouse

Robert Hettig  
Van Voorhis Munson

John Nell  
Ruth Stackel





*Standard Bearers and Custodians of the Flag*

CLASS OF JANUARY '28

FRANK BOWIE  
LUCILE BREWER

CLASS OF JUNE '28

EDGAR TALLMADGE  
BEATRICE LEVIN

The formal induction of the National Honor Society into Monroe High School was held in the graduation exercises of the Class of January, 1928. The Society corresponds, in high schools, to the Phi Beta Kappa awards that are given to honor students in the colleges and universities. In order to qualify for membership, the student must be in the upper fourth of his class, he must be active in school activities, and his character must be of the highest type.

From this group of the honor society, the Standard Bearer and the Custodian of the flag are chosen. Edgar Tallmadge and Beatrice Levin are the first standard bearer and custodian to be chosen under this new system. Frank Bowie and Lucile Brewer were the standard bearer and custodian for the Class of January, '28.

The high standards of character which are required for membership into the society makes it one of the most looked up to and the most desirable honor for a student in the school to receive.



## Monroe Life Staff

### EDITORIAL STAFF

<i>Fall Term</i>		<i>Spring Term</i>
ROBERT TRAVERS	<i>Editor-in-Chief</i>	STANLEY TOWNSEND
WILBUR SPRAGUE	<i>Associate Editor</i>	WARD WHIPPLE
STANLEY TOWNSEND	<i>Associate Editor</i>	MARGARET WILLIAMS
GEORGE LEADER	<i>Associate Editor</i>	WILLBUR SPRAGUE
EDWIN RUSSELL, IRVING POSNER	<i>Sports Editor</i>	IRVING POSNER
MARGARET WILLIAMS	<i>Exchange Editor</i>	HYMAN KAPLAN
	<i>Dramatics Editor</i>	CHARLES HUNT
	<i>Publicity Manager</i>	HARRY DEBLAWE

### REPORTERS

Charles Hunt  
Olive Smith  
Lucile Baird  
Janet MacFarlane

Helen Anderson  
Jane Grouse  
Marjorie Bristow  
Rosamond Lockwood

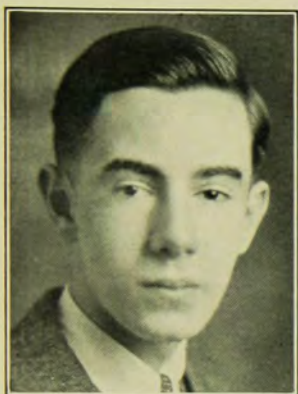
*Handwritten notes:*  
Helen Anderson Peal  
Marjorie Bristow

### Faculty Advisors

George S. Carhart  
Henry Cardew

Charles H. Carver  
Arthur Neff





STANLEY TOWNSEND



GEORGE S. CARHART

*George S. Carhart*

### *Monroe Life*

The student publication of Monroe High School, *The Monroe Life*, took the greatest stride forward in its development as a real school newspaper, when during the fall term, the issue was changed from a monthly publication to a semi-monthly issue. The greatest amount of credit for this development belongs to Robert Travers, Editor-in-Chief, and George S. Carhart, faculty advisor, who established the publication on a firm semi-monthly basis.

Stanley Townsend, Editor-in-Chief for the following term has done much to keep this new change on a profitable standing, and to establish the *Monroe Life* more definitely as a semi-monthly publication.

Another great triumph of the paper was the winning of a third prize in the Columbia Scholastic Press Association competition held at New York annually. The *Monroe Life* was the only paper in Rochester to take a prize at this event, and in recognition of its achievement it has received from the Press Association a medal and a ribbon which have been placed in the Monroe trophy case. The editors and faculty advisors who had charge of the papers that took the prize are: George S. Carhart, Robert Travers, Charles H. Carver, and Stanley Townsend.

To the faculty advisors, the untiring efforts of the staff and the entire student body which has so loyally supported the publication may be attributed the great success of the *Monroe Life*. The retiring editors leave their posts with the hope that the paper shall be as successful in Monroe High under the guidance of new editors, as it has been this year.



STAFF OF JUNE 1928

*Monrolog*

EDITORIAL STAFF—JUNE 1928

ROBERT TRAVERS	<i>Editor-in-Chief</i>	CHRISTIAN SCHICK	<i>Statistic Editor</i>
WALLACE ELY	<i>Associate Editor</i>	CHARLES GALLAGHER	<i>Sports Editor</i>
HARRY BRADLEY	<i>Art Editor</i>	LUCILE BAIRD	<i>Organization Editor</i>
GEORGE HAHN	<i>Photograph Editor</i>	EDYTHE FARNHAM	<i>Drama Editor</i>
	HYMAN KAPLAN	<i>Music Editor</i>	

*Assistants*

Jane Grouse    Olive Smith    Maurice Ozer    Mary Kelly    Margaret Williams

BUSINESS STAFF

EDGAR TALLMADGE	<i>Business Manager</i>
WILLIAM MARKS	<i>Assistant Business Manager</i>
ROBERT SEARS	<i>Circulation Manager</i>

*Faculty Advisors*

George S. Carhart    Elmer P. Meulendyke

EDITORIAL STAFF—JANUARY 1928

LUCILE E. BREWER	<i>Editor-in-Chief</i>	SARAH M. CLARK	<i>Art Editor</i>
FRANK B. BOWIE	<i>Associate Editor</i>	SIDNEY FEYDER	<i>Photograph Editor</i>
WILLIAM C. AGNEW	<i>Associate Editor</i>	EDGAR PRESENT	<i>Literary Editor</i>
JACK M. KIMBLE	<i>Associate Editor</i>	ROBERT BASCHNAGEL	<i>Sports Editor</i>
MARGUERITE G. WEINER	<i>Associate Editor</i>	CARL F. PAUL	<i>Music and Drama Editor</i>

BUSINESS STAFF

CARROLL WILSON	<i>Business Manager</i>
GEORGE C. HUNT, JR.	<i>Publicity Manager</i>

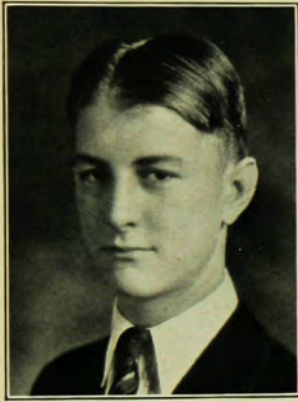
*Faculty Advisors*

George S. Carhart    Elmer P. Meulendyke



STAFF OF JANUARY 1928





ROBERT TRAVERS



LUCILE BREWER

## *The Monrolog*

The *Monrolog* is the most important milestone in the life of graduating classes of Monroe High School, inasmuch as it will remain a perpetual record of the events of the class, and the achievements of each individual student.

The name *Monrolog*, established by the first graduating class of the school has been used by this class also, with the hope that it will be used in every annual published by the school, and that it will eventually become synonymous to the title, Senior Annual of Monroe High School.

To the Editors, Lucile Brewer and Robert Travers and their staffs, as well as to the faculty advisors, George S. Carhart, and Elmer P. Meuelendyke, is extended the grateful appreciation of the school for their active part in the production of the book.



ELMER MEUELENDYKE



GEORGE HAHN

*J. Lockwood*  
*1928*



## *Pencil Pushers*

### OFFICERS

ROBERT TRAVERS . . . . .	<i>President</i>
MARGARET WILLIAMS . . . . .	<i>Secretary-Treasurer</i>
CHARLES CARVER . . . . .	<i>Faculty Advisor</i>

### MEMBERS

Lucile Baird	Richard Goldstein	Wilbur Sprague
Harry Bradley	Ward Whipple	Richard Winans
Edythe Farnham	Margaret Williams	Marie Kayser
Arden Howland	Jane Grouse	Hyman Kaplan
George Hahn	Stanley Townsend	Maurice Ozer
Robert Travers	Edwin Russell	Wallace Ely
Edgar Tallmagde	George Baker	Rosamond Lockwood
Jane Taylor	Dorothy Anger	William Silverman
Richard Goldman	Matilda Rhinehart	Susan Lipsky

The Pencil Pushers Club, the first Literary Organization to be instituted in Monroe High School was formed on March 16, when twenty charter members met and held their first meeting. Dinner meetings are sponsored by the club, at which prominent literary authorities and writers address the members. The club has been received enthusiastically by the whole school, and many students have applied for membership. To Charles Carver, faculty advisor, is extended the appreciation of the club for the work he has done to bring about the club's success.





## Girl Reserves

### OFFICERS

MARGARET LENT-KOOP	.....	<i>President</i>
JANET HAAS	.....	<i>Vice-President</i>
ELSIE LANGLEY	.....	<i>Secretary-Treasurer</i>

### MEMBERS

Doris Backus	Ethel O'Brien
Laura Beine	Genevieve Richardson
Marjorie Bushnell	Thelma Richardson
Jean Eastwood	Sarah Roman
Janet Haas	Martha Schubnell
Elsie Langley	Anne Stark
Winifred Lansing	Doris Taylor
Margaret Lent-Koop	Virginia Wilson
Janet Loysen	Jean Woodbury



## M-Y Club

### OFFICERS

EDYTHE FARNHAM	.....	President
LUCILE BAIRD	.....	Vice-President
ANNA BALLARIAN	.....	Secretary
ELIZABETH HERT	.....	Treasurer

### MEMBERS

Ethel Anderson	Jane Grouse	Matilda Rhinehart
Lucile Baird	Elizabeth Hert	Harriet Rippey
Anna Ballarian	Mary Kelly	Jane Rogers
Katherine Blackmon	Regina Landow	Dorothy Smith
Lucile Brewer	Rosamond Lockwood	Helen Snearing
Ruth Cannon	Janet MacFarland	Marian Snyder
Sarah Clark	Elizabeth Norton	Helen Southworth
Elizabeth Clubb	Dorothy Oemisch	Grace Springstead
Edith Cook	Margaret Palmer	Ruth Stackel
Dorothy Cooney	Eleanor Pheteplice	Jane Swain
Helen Dildine	Miriam Pheteplice	Marguerite Weiner
Edythe Farnham	Virginia Pierson	Margaret Williams
Mildred Frank	Wilhelmine Renshaw	Grace Welsh
Sylvia Goldstein		Marian Whitbeck

*much love  
to  
Peg from  
Kay*





*Hi-Y Club*

OFFICERS

EDWIN RUSSELL	.....	<i>President</i>
ROBERT TRAVERS	.....	<i>Vice-President</i>
ARDEN HOWLAND	.....	<i>Secretary</i>
GEORGE HAHN	.....	<i>Treasurer</i>

MEMBERS

- |                    |                    |
|--------------------|--------------------|
| William Agnew      | Arden Howland      |
| Theodore Benedict  | Howard Imray       |
| Harold Berlove     | John Keeler        |
| Robert Beyland     | Jack Kimble        |
| Frank Bowie        | George Leader      |
| Harry Bradley      | Richard Longhouse  |
| Elon Clark         | Thomas Price       |
| James Clark        | Bruce Ross         |
| Richard Coddington | McLean Russell     |
| William Dean       | Edwin Russell      |
| Gerald Elliott     | Christian Schick   |
| Wallace Ely        | William Southworth |
| Louis Flanders     | John Stanton       |
| Charles Gallagher  | Edgar Tallmadge    |
| Charles Gay        | George Taplin      |
| George Hahn        | Stanley Townsend   |
| Robert Harris      | Robert Travers     |
| Richard Henderson  | Caroll Wilson      |



*It Pays to Advertise—*

*Senior Play presented by Class of January 1928 on  
November 18, 1927*

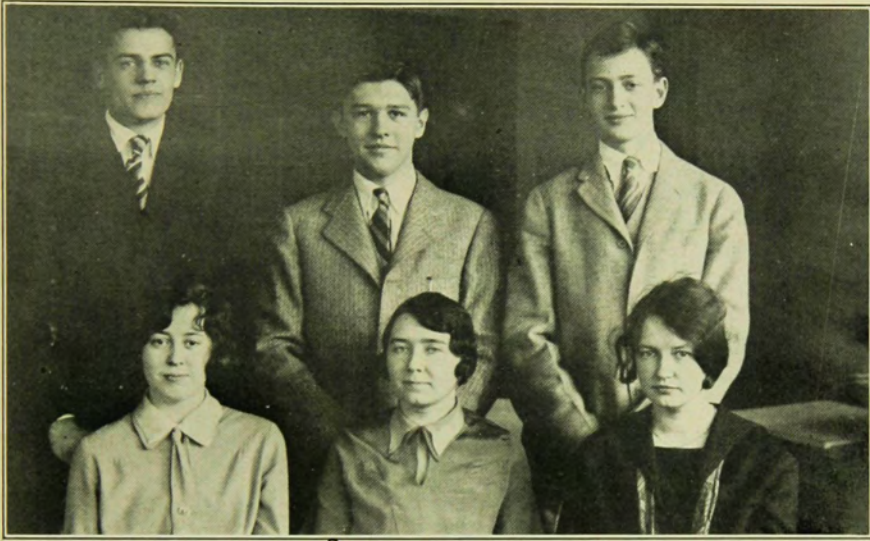
CAST

<i>Mary Grayson</i> . . . . .	MARGUERITE G. WEINER
<i>Johnson, butler at the Martin's</i> . . . . .	WILLIAM AGNEW
<i>Comtesse de Beaurien</i> . . . . .	LUCILE E. BREWER
<i>Rodney Martin</i> . . . . .	JACK M. KIMBLE
<i>Cyrus Martin</i> . . . . .	CARL F. PAUL
<i>Ambrose Peale</i> . . . . .	FRANK B. BOWIE
<i>Marie, maid at the Martin's</i> . . . . .	BELLE WEISS
<i>William Smith</i> . . . . .	ARTHUR SERGEANT
<i>George McChesney</i> . . . . .	SIDNEY FEYDER
<i>Miss Burke</i> . . . . .	DOROTHY SMITH
<i>Ellery Clark</i> . . . . .	G. CHARLES HUNT
<i>Charles Bronson</i> . . . . .	THEODORE HAIDT
<i>Six Sandwich Men:</i> LEWIS HELLEMS, ALBERT HOBBIIE, ALBERT BURNETT, GORDON LEVINSON, EARL SMITH, HAROLD RIVLIN.	

PRODUCING STAFF

<i>Director</i> . . . . .	MISS M. WINONA ENGLISH
<i>Publicity Manager</i> . . . . .	G. CHARLES HUNT
<i>Tickets</i> . . . . .	ROBERT BASCHNAGEL, ARTHUR SERGEANT
<i>Properties</i> . . . . .	EDGAR PRESENT, MYRTLE MATTICE, SARAH CLARK
<i>Stage Manager</i> . . . . .	ROBERT FRIDD
<i>Electrician</i> . . . . .	WALTER GIBAUD
<i>Mistresses of Wardrobe</i> . . . . .	ANNA SENDEROV, SARAH SHENBERG





*Lucile Hunt*

*French Play*

*Par Un Jour de Pluie*

*Presented by the Class of January, 1928*

*Directed by MISS LUCILE HUNT*

CAST

<i>Blanche</i>	.....	LUCILE BREWER
<i>Adele</i>	.....	SARAH CLARK
<i>Raoul</i>	.....	JACK KIMBLE
<i>Goutron</i>	.....	CARL PAUL
<i>Joseph</i>	.....	FRANK BOWIE



## Captain Applejack

Senior Play of the Class of June 1928, presented February 24, 1928

### CAST

Ambrose Applejohn

Poppy Faire

Anna Valeska

Ivan Borolsky

Mrs. Pengard

Horace Pengard

Mrs. Agatha Whatcombe

Lush, a butler

Palmer, a maid

Dennet

Johnny Jason

Ensemble: HENRY ADAMS, ELON CLARK, WALLACE ELY, GERALD FINK, CHARLES GOLDSTEIN, ARDEN HOWLAND, MORRIS OZER, LESTER RAPPAPORT, ROBERT SEARS, EDGAR TALLMADGE

EDWIN RUSSELL

MARIE KAYSER

SELMA SIMS

RICHARD GOLDSTEIN

MARGARET PALMER

RICHARD WINANS

LUCILLE BAIRD

STANLEY TOWNSEND

CORINNE BAHRINGER

HOWARD LINSOTT

CHRISTIAN SCHICK

### STAFF

Director

Business Manager

Assistant

Publicity Manager

Assistants

Stage Manager

Assistant

Properties

Assistant

Electrician

Assistant

Mistress of Wardrobe

Assistant

WINONA ENGLISH

GEORGE HAHN

WENDELL CALDWELL

ROBERT TRAVERS

ROBERT SIEBERT, JAMES CONNOLLY

FRANCIS WARBURTON

HAROLD SECKER

VICTOR CHAMBERS

ROBERT FANCY

FREDRICK TYRELL

EUGENE SULLIVAN

MARY KELLY

DOROTHY NORTHRUP





*Rena C. Dumas*

LES BOULINARD

*Jack Houseknecht - Bodard  
Σ Δ*

### French Comedies

Presented March 9, 1928, by the Class of June 1928, under direction of  
MISS RENA C. DUMAS and MISS LUCILE HUNT

#### CAST

Jack Houseknecht  
Edythe Farnham  
Hyman Kaplan  
Beatrice Levin  
Stanley Townsend  
Edgar Tallmadge  
Carroll Wilson  
Wallace Ely  
Arden Howland  
Louis Flanders

John Millard  
Hilda Bumpus  
Elizabeth Hert  
Maurice Gerks  
Oliver Zinnsmeister  
Dorothy Hall  
Wilson MacWilliams  
Rosamond Lockwood  
Henry Adams  
Dick McKay

#### BUSINESS STAFF

*Managers* . . . . .

*Stage Managers* . . . . .

*Publicity Manager* . . . . .

*Mistresses of Wardrobe* . . . . .

GEORGE LEADER, EDWIN RUSSELL

HARRY BRADLEY, GEORGE ANDERSON

GEORGE CHARLES HUNT, JR.

HARRIETT MADDEN, BEATRICE FITZGERALD



LEUR BONHEUR

1928



*Katharine N. Cannon*

*Miss Winona English*

### *Dramatic Review*

Since September, 1927, a greater interest has been taken in dramatic work than ever before in Monroe High School. This interest is shown in our improved assembly programs during the school year.

The initial dramatic production on a large scale was the first of the one-act plays, given April 8, 1927, by the January '28 class. The fine cast and its competent director, Miss Lucile Hunt, made this comedy, "Par un Jour de Pluie," a real success.

On November 18, "It Pays to Advertise," the senior play of the January '28 class, was given before a capacity house. The patient efforts of Miss Winona English was largely responsible for its success. All the parts were exceedingly well done, and the cast and its director were accorded high praise. The play itself was an uproariously funny advertising farce, full of action.

"Les Boulinard," and "Leur Bonheur," were the French Comedies presented by the class of June '28 under the direction of Miss Rena Dumas and Miss Lucile Hunt, on March 9, 1928. Both comedies were great successes, and the cast and directors deserve the praise given them by the large group of spectators that saw the production.

The senior play of the class of June '28, "Captain Applejack," by Walter Hackett, was presented in the auditorium on February 24, 1928. The production was a uproarious comedy packed with thrills which convinced the large audience that it was one of the most successful plays ever presented by a senior graduating class of the school. The cast and its director, Miss Winona English, are to be congratulated on their great piece of work.

The graduating classes wish to express their deep appreciation for the splendid service and cheerfulness of Miss Hunt, Miss Beebe, and Miss English, without whom it would be impossible to present plays of such a fine calibre, and whose help has done much to make the past year a dramatic success.





## *Band*

JOHN S. LIVERMORE, *Conductor*

### *Trumpets*

Taylor Bell  
 Herbert Harvey  
 Mark Johnstone  
 Jack Kimble  
 Robert Winslow

### *Trombones*

John Parker  
 Fred Rapp

### *French Horns*

Bernard Drexler  
 Esther Ticker

### *Baritone*

Albert Wolfe

### *Clarinets*

Howard Linscott  
 Harry DeBlawe  
 Richard Burgess  
 Christian Schick  
 Francis Foster  
 Robert Fridd  
 John Harvey  
 Louis Hellems  
 Wilson McWilliams

### *Saxophones*

Wendell Caldwell  
 Abraham Strom  
 George Hackett  
 Irving Posner  
 Francis Warburton  
 Donald Nobles

### *Tuba*

Lawrence Sterling

### *Piccolo*

Rudolph Rohricht  
 Seward Robinson

### *Bassoon*

Robert Beyland  
 Sidney Kasiner

### *Oboe*

John Schubert

### *Drums*

John Boothby  
 Richard Coddington  
 Ronald Doll  
 Oliver Zinsmeister

*John Schubert*



## Orchestra

JOHN S. LIVERMORE, *Conductor*

### *Violins*

Mary Atwater  
Mildred Baumann  
Gerald Fink  
Harold Gallant  
Hyman Julius Kaplan  
Ethel Klonick  
Daniel Kushner  
Selma Sims  
Paul Yeager  
Arax Ballarian  
Wayne Barlow  
May Cohen  
Richard Goodchild  
Vera Lake  
Edgar Tallmadge  
Paul Peters  
Irene Welsh

### *Tuba*

Lawrence Sterling

### *Violas*

Ella Feiock  
VanVoorhis Munson  
Lillie Swain

### *Cello*

Sarah Clark  
Mary Eidam  
Elizabeth Norton  
Margaret Williams  
Jane Swain

### *Bass Viol*

Albert Wolfe

### *Oboe*

John Schubert

### *Trombones*

John Parker  
Fred Rapp

### *Piano*

Dorothy Cooney, Eleanor Welsh

### *Bassoon*

Robert Beyland  
Sidney Kasiner

### *Flute*

Rudolph Rohricht

### *Clarinets*

Francis Foster  
Howard Linscott

### *Trumpets*

Mark Johnstone  
Jack Kimble  
Robert Winslow

### *French Horns*

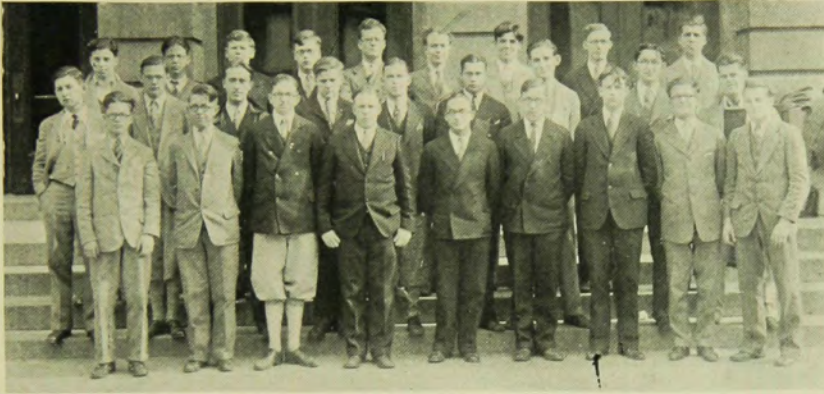
Bernard Drexler  
Esther Ficker

### *Drums and Tympani*

Richard Coddington  
Albert Zinsmeister

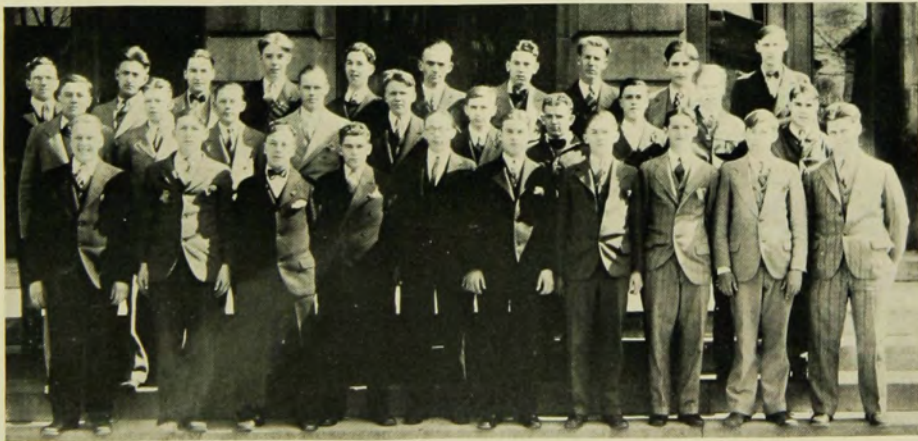
1928





**BOY'S GLEE CLUB**

First Row—Field, McMunn, King, Bushnell, Ozer, Bostwick, Goodchild, Hellems, Bedford.  
Second Row—Sherman, Marks, Gallant, Peters, Kelley, Kushner, Goldstein, Kaplan, Nixon.  
Third Row—Engel, Schultz, Allen, Munson, Meyer, Hettig, McNab, Doran, Mr. Troup, conductor.



**INDUSTRIAL BOYS' GLEE CLUB**

First Row—Bushnell, Saberstone, Stanton, Frank, Tiffany, Marks, Joss, Levin, Warren, Nixon.  
Second Row—Johnson, Goebel, Alger, Paige, McQuaters, Vandewall, Rosenthal, Guerin, Hess, Young.  
Third Row—Mr. Hague, Director; Bridge, Popp, Hansen, Noyes, Arthurton, Tyrell, Hamilton, Robinson, Von.



## Girls Glee Club

GUY L. HAGUE, *Director*

Ethel Anderson  
 Betty Andrews  
 Isabel Asmuth  
 Mary Atwater  
 Corrine Bahringer  
 Anna Ballarian  
 Lucille Baird  
 Mildred Baldwin  
 Virginia Bennet  
 Ruth Cannon  
 Elizabeth Cambier  
 Henriette Betlam  
 Louise Clasgeans  
 Evelyn Clarke  
 May Cohen  
 Dorothy Cooney  
 Thelma Derby  
 Mary Elizabeth Daniels  
 Louise V. Doran  
 Eleanor Duryea  
 Melva Eaton  
 Marjorie Frankenstein  
 Marie Foreman  
 Edythe Farnham  
 Geraldine Fritz  
 Jane C. Grouse

Ruth Gibbons  
 Selma Goldstein  
 Amy Gorwaiz  
 Elizabeth Hert  
 Mary Hetzel  
 Florence Hoffman  
 Elsie Hurvitz  
 Louise Hogan  
 Vera Lake  
 Adele Leftkowitz  
 Mary Livingstone  
 Ethel Mabbett  
 Florens McAdam  
 Kathleen McCahan  
 Janet R. McFarlane  
 Louise Meeker  
 Gladys Merrick  
 Lucille Milas  
 Bertha Milbrandt  
 Robina Nichols  
 Pearl Oppenheim  
 Margaret Palmer  
 Miriam Pheteplice  
 Marguerite Price  
 Cecyle Posner  
 Virginia Pierson

Rifka Rotenberg  
 Mabel Roger  
 Martha Scubmehl  
 Ada M. Schoenberg  
 Dorothy Seaman  
 Kathleen Skilton  
 Bertha Spaber  
 Grace Springstead  
 Ruth Stackel  
 Helen Southworth  
 Marion Sullivan  
 Helen Suter  
 Jane Swain  
 Lillie Swaim  
 Helen Stewart  
 Marion Shapero  
 Jane C. Taylor  
 Grace VanDeMar  
 Grace VanNeel  
 Lois Voelker  
 Eleanor Welch  
 Jean D. Watkeys  
 Mildred Weiss  
 Evelyn Wheeler  
 Margaret Williams





## Senior Mixed Chorus

GUY L. HAGUE, *Director*

Ethel Anderson  
 Betty Andrews  
 Isabel Asmuth  
 Mary Atwater  
 Corrine Bahringer  
 Anna Ballarian  
 Lucille Baird  
 Mildred Baldwin  
 Virginia Bennet  
 Henriette Betlam  
 Ruth Cannon  
 Elizabeth Cambier  
 Louise Clasgeans  
 Evelyn Clarke  
 May Cohen  
 Dorothy Cooney  
 Thelma Derby  
 Mary Elizabeth Daniels  
 Louise V. Doran  
 Eleanor Duryea  
 Melva Eaton  
 Marjorie Frankenstein  
 Marie Foreman  
 Edythe Farnham  
 Geraldine Fritz  
 Jane C. Grouse  
 Ruth Gibbons

Selma Goldstein  
 Amy Gorwaiz  
 Elizabeth Hert  
 Mary Hetzel  
 Florence Hoffman  
 Elsie Hurvitz  
 Louise Hogan  
 Vera Lake  
 Adele Leftkowitz  
 Mary Livingstone  
 Ethel Mabbett  
 Florens McAdam  
 Kathleen McCahan  
 Janet R. McFarlane  
 Louise Meeker  
 Gladys Merrick  
 Lucille Milas  
 Bertha Milbrandt  
 Robina Nichols  
 Pearl Oppenheim  
 Margaret Palmer  
 Virginia Pierson  
 Cecyle Posner  
 Miriam Pheteplace  
 Marguerite Price  
 Rifka Rotenberg  
 Mabel Roger

Martha Scubmehl  
 Ada M. Schoenberg  
 Dorothy Seaman  
 Kathleen Skilton  
 Bertha Spaber  
 Grace Springstead  
 Ruth Stackel  
 Helen Southworth  
 Marion Sullivan  
 Helen Suter  
 Jane Swaim  
 Lillie Swaim  
 Helen Stewart  
 Marion Shapero  
 Jane C. Taylor  
 Grace VanDeMar  
 Grace VanNeel  
 Lois Voelker  
 Eleanor Welch  
 Jean D. Watkeys  
 Mildred Weiss  
 Evelyn Wheeler  
 Margaret Williams  
  
 Joseph Allen  
 George A. Baker  
 James Bedford

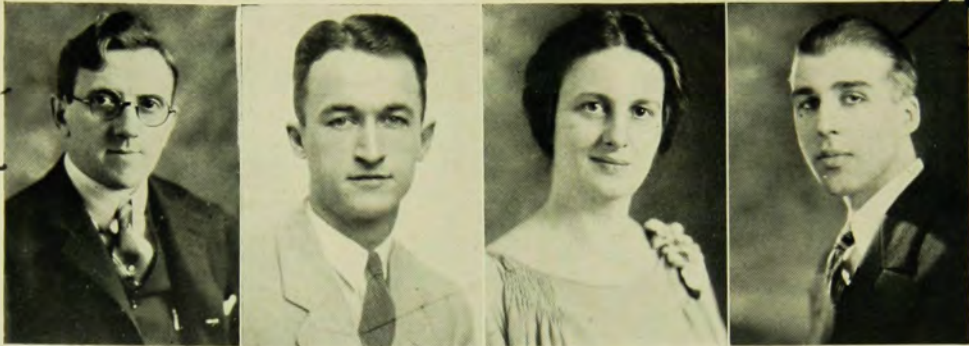
Rolison Bostwick  
 Elmer Bushnell  
 Gerald Elliot  
 Liebel Engle  
 Raymond Field  
 William Ford  
 Robert Fancy  
 Richard Goodchild  
 Richard Goldstein  
 Harold Gallant  
 Robert Hettig  
 Hyman Kaplan  
 Fred Kelly  
 Leon Kushner  
 Maurice King  
 Richard Marks  
 Luis Maier  
 Allen McNab  
 William McMunn  
 Wilfred Nixon  
 Maurice Ozer  
 Paul Peters  
 Harold Rohrricht  
 Theodore Schultz  
 Loyal Sherman  
 William Silverman  
 Clayton Warren



Happy memories of all our joys - who put  
the pep in the girl. who - and who was the  
rush in the second act of Pickles?

Guy L. Hague - '18

George T. Troup



GUY L. HAGUE      JOHN LIVERMORE      EVA WANNAMACHER      GEORGE TROUP

Eva Louise Wannamacher

### Music

The importance of music in Monroe High School can hardly be over-estimated. More and more pupils are joining the classes in Voice Training, Theory, and Music Appreciation conducted by Miss Wannamacher, Mr. Troup, and Mr. Hague. The increased membership and the benefits received from these classes show that music as a subject is becoming as important as French, German or any foreign language.

There is seldom an event in the school or connected with it, be it athletic, social, or dramatic that does not call upon some musical organization to create an atmosphere for its program. The band and orchestra, under the direction of Mr. Livermore are now indispensable parts of our assembly periods. The programs given by the Girl's Glee Club under the direction of Guy Hague, the Boy's Glee Club led by Mr. Troup, and the Mixed Chorus conducted by Mr. Hague have been exceedingly well done and are greatly appreciated.

The annual spring concert, called the May Festival, in which all the musical organizations participate is always presented before a full house. A great deal of time and effort is expended, especially by the directors of these organizations, as the marvelous results reflect.

The past term has contributed more than its share to the great goal—a series of organizations that will embrace every branch of the art for every student of Monroe High School.





# S P O R T S



## Basketball

BURNS W. BEACH, *Coach*  
 EDWIN RUSSELL, *Manager*  
 ALBERT BURNETT, *Captain*

*Burns Beach*

### TEAM

#### *Forwards*

Anderson  
 Liberman  
 Dean  
 Caldwell

#### *Centers*

Arden Howland  
 Nelson Sengle

#### *Guards*

Albert Burnett  
 Louis Cirrincione  
 Frank Fitzpatrick



*a Burnett*



CAPTAIN BURNETT

Playing for the first time in a league made up of teams from every high school in the city, the Monroe High basketball team hung up an enviable record by beating every team in the loop with the exception of the championship East High five. The Monroe tossers ended up the season in tie for second place honors with the John Marshall five.

The team played a total of 23 games, and scored victories in 16 of them. They piled up a total of 579 points against a score of 473 for their opponents.

The spirit of the student body in following the record of the team and in turning out for home games was very gratifying. Almost three quarters of the entire school was present at the Armory to see the final game between East and Monroe.

The custom of ending the basketball season with a banquet at the Monroe Y. M. C. A., as guests of the Monroe Hi-Y Club was continued this year when members of the team were the guests of the club.

SEASON'S RESULTS

Monroe	37	Irondequoit	18
Monroe	29	Charlotte	13
Monroe	27	School of Commerce	17
Monroe	16	Marshall	18
Monroe	18	East	23
Monroe	25	Technical	15
Monroe	23	West	20
Monroe	21	U. of R. Frosh	28
Monroe	33	Batavia	24
Monroe	22	Newark	10
Monroe	26	Palmyra	24
Monroe	33	Newark	20
Monroe	28	Charlotte	9
Monroe	15	East	27
Monroe	22	Technical	20
Monroe	25	Canandaigua	28
Monroe	23	West	25
Monroe	28	Greigsville	26
Monroe	21	Alfred Frosh	23
Monroe	23	Shortsville	20
Monroe	25	East Rochester	23
Monroe	28	Attica	22
<hr/>		<hr/>	
	579		473



## *Reserve Basketball Team*

ARTHUR NEFF—*Coach*

CHARLES FOSTER—*Manager*

ARTHUR FISHBERG—*Captain*

### LINE-UP

*Forwards*

Travers  
Caldwell

*Centers*

Clark  
Berlove

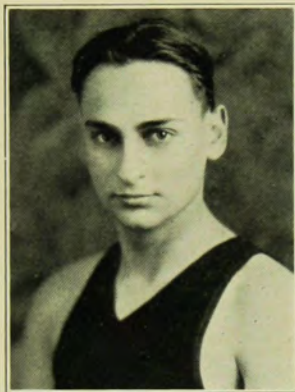
*Guards*

Fishberg  
Fitzpatrick

*Substitutes*

Moskow  
Sprague  
Ely  
Imray  
Anderson  
Russell





*Arthur Fishberg*  
*DB*

CAPTAIN FISHBERG

### *Reserve Basketball*

Monroe High Reserve basketball team established an enviable record for themselves by downing every team in the Scholastic Reserve League, and by winning the championship of the league.

This is the first city wide championship a Monroe team has won on the basketball court.

The Red and Blue scrubs piled up a total of 519 points in their sixteen games, while their opponents could score but 243 markers. The only game the team lost was to East High by 7 points, but this loss was avenged when the scrubs downed East High in their second clash, by 14 points.

The team played each game with such spirit that it soon was recognized as the scrappiest team in the city, a title that was well deserved.

#### RECORD

Monroe	32	Irondequoit	4
Monroe	34	School of Commerce	11
Monroe	30	Marshall	16
Monroe	13	Holley	12
Monroe	34	Charlotte	19
Monroe	20	East	27
Monroe	35	Technical	15
Monroe	29	Palmyra	9
Monroe	39	West	11
Monroe	33	Canandaigua	16
Monroe	30	Marshall	24
Monroe	60	Charlotte	10
Monroe	34	East	15
Monroe	45	Technical	21
Monroe	25	Canandaigua	8
Monroe	26	West	25
	<hr/>		<hr/>
	519		243



*Soccer*

LEWIS MICHELSON—*Coach*  
 ROBERT SIEBERT—*Captain*  
 ARTHUR FISHBERG—*Manager*

LINE-UP

*Center*  
 Leonard Caldwell

*Half-Backs*  
 Robert Siebert  
 Harold Berlove  
 Douglas Anderson

*Full-Backs*  
 Albert Burnett  
 Edward Twardokus

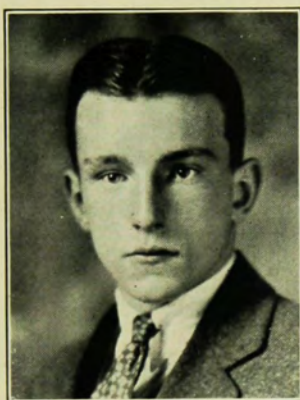
*Insidies*  
 Earl Smith  
 Russell Anderson

*Wings*  
 Edwin Russell  
 Arden Howland

*Goalie*  
 Wallace Ely

*Substitutes*  
 Louis Cirrincione  
 Frank Fitzpatrick  
 Irving McGuidwin  
 Sam Rosenthal  
 Sol Saperstone  
 Harold Walters





CAPTAIN SEIBERT

### *Soccer Season*

The Monroe Soccer Team had a splendid season in 1927, setting an enviable record for future tams to aim at.

Defeated by John Marshall in the first game, Monroe then went out and set a pace that very nearly placed the team in the league championship berth, tying with Technical High and defeating every other team in the league except West High.

The team was splendidly coached and functioned perfectly, each player co-operating and playing fine soccer. There were no dull games, for Monroe always played and fought fast, always keeping the other team working.

Monroe finished in third place, tie with Technical, with a percentage of .667.

#### SEASON SCORES

Monroe	1	John Marshall	5
Monroe	2	Technical	2
Monroe	2	Canandaigua	1
Monroe	2	Charlotte	1
Monroe	3	East	2
Monroe	3	Irondequoit	1
Monroe	0	West	1
Totals	13		13



## Baseball

BURNS BEACH—*Coach*  
 JAMES CLARK—*Manager*  
 LEONARD CALDWELL—*Captain*

### TEAM

Eugene Sullivan  
 Leonard Caldwell  
 William McVicar  
 Arden Howland  
 Chester Clark

Robert Meisch  
 Louis Cirricione  
 Douglas Anderson  
 Arthur Liberman

Frank Fitzpatrick  
 Adrian Murray  
 John Noyes  
 Joseph Johnson  
 Edward Twardukus

### SCHEDULE

April 27 Monroe *vs.* School of Commerce  
 May 1 Monroe *vs.* U. of R. Frosh  
 May 4 Monroe *vs.* West  
 May 11 Monroe *vs.* Canandaigua  
 May 12 Monroe *vs.* Manlius  
 May 16 Monroe *vs.* Lima  
 May 18 Monroe *vs.* Technical

May 19 Monroe *vs.* LeRoy  
 May 22 Monroe *vs.* Webster  
 May 23 Monroe *vs.* Batavia  
 May 25 Monroe *vs.* Marshall  
 May 30 Monroe *vs.* Shortsville  
 June 8 Monroe *vs.* East  
 June 15 Monroe *vs.* Charlotte





## Track

LEWIS MICHELSEN—*Coach*

JOHN P. NELL—*Manager*

EDWIN RUSSELL—*Captain*

### TEAM

Edwin Russell

Frank Bowie

Howard Imray

Nathaniel Lawrence

William Scott

John Nell

Joseph Sturges

Robert Travers

Howard Palmer

Robert Siebert

Charles Gay

Charles Playford

Gerald Elliott

Hiram Phillips

Theodore Haidt

Edward Drexler

Charles Vaughn

### SCHEDULE

May 7 Monroe *vs.* Technical

May 11 and 14 Monroe *vs.* John Marshall, U. of R. Frosh

May 16 Monroe *vs.* Invitation at Alfred

May 19 Sectional Meet

May 22 Monroe *vs.* West High

May 25 Monroe *vs.* Charlotte

May 26 Interscholastic Meet

May 28 Monroe *vs.* East High



© Has Haas.

## Swimming

LEWIS MICHELSON—*Coach*  
EDGAR PRESENT—*Manager*

*50 yard*—Theodore Haidt, Louis Flanders, William Fowler

*100 yard*—Charles Hass, Robert Beyland

*200 yard*—Charles Playford, Jack Houseknecht

*Back Stroke*—Gordon Levinson, Lucius Button, Calvin Mohr

*Breast Stroke*—Louis Flanders, Derwood Brough, Junior Bradstreet

*Diving*—Frederick Miller

*Relay*—Louis Flanders, Charles Haas, Charles Playford, Theodore Haidt, Robert Beyland, William Fowler

### SEASON'S SCORES

Monroe 27	West High 32	Monroe 31	East High 19
Monroe 16	West High 43	Monroe 26	Manlius 31
Interscholastic Meet:		State Sectional Meet:	
West 17, Monroe 26, East 11, Marshall 2		West 46, Monroe 29, East 11	
		Monroe 38	Manlius 21

After scoring victories in the State Sectional Swimming meet, Playford, Haas, Flanders, and Levinson represented Monroe at the State Meet in Troy, where they gave a good account of themselves.





## *Cross-Country*

ELBERT ANGEVINE—*Coach*  
 ROBERT BASCHNAGEL—*Captain*  
 LEWIS HELLEMS—*Manager*

### TEAM

Edgar Tallmadge  
 Robert Baschnagel  
 Robert Sears

Robert Travers  
 Robert Fancy

Hiram Phillips  
 Abraham Strom  
 Gerald Elliott

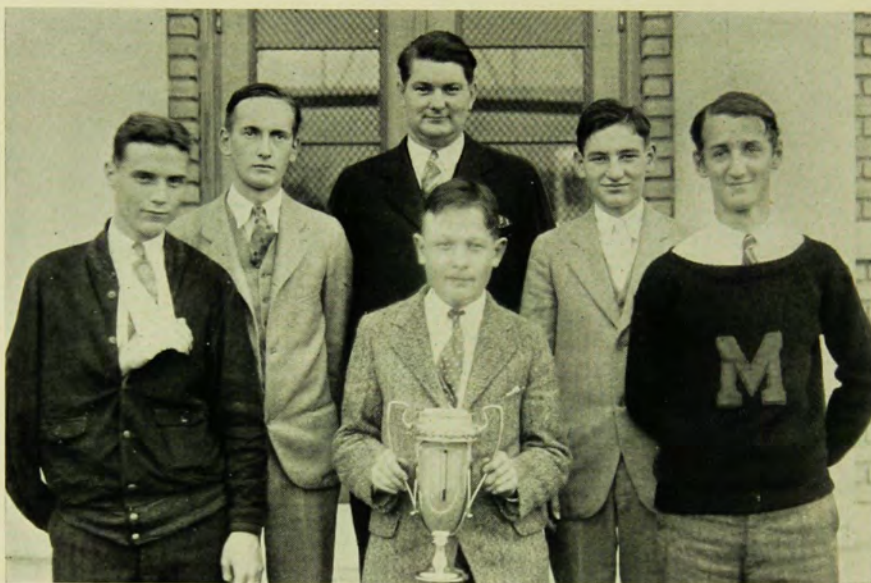
### SEASON'S SCORES

Monroe	50	East High	18
Monroe	38	West High	23

### *Inter-Sectional Meet*

Monroe	28	West High	35	East High	28
--------	----	-----------	----	-----------	----

As a result of the Sectional Meet held at Genesee Valley Park, November 12, Monroe sent its first representative to the State Meet at Troy, N. Y., thus establishing a precedent for future teams. The runner who secured this honor was Robert Siebert, who took third place in the Sectional Meet. In the State Meet the following week, Siebert placed fiftieth from among one hundred contestants. This was a fine position in view of the fact that the contestants were the pick of New York State's high school long distance runners.



## Golf

PHILLIP SCHNEIDER—*Coach*  
 WILLIAM DEAN—*Captain*  
 DONALD MCNALL—*Manager*

### GOLF TEAM

William Dean  
 James Connolly

Jean Chantreuil  
 Robert Sears

The Monroe Golf Team secured much renown in the city at large by taking the Inter-Scholastic title in 1927, in competition with East High School and John Marshall.

Monroe placed four men whose total number of strokes was less than that of any other four players connected with any one school. Although there was competition with West High School, this school having less than four men in the tournament, did not enter a team.

Monroe's brilliant quartette of golf players secured their places through their standings in the pre-season tournament for golf players of the entire senior high student body.

The team had fine coaching and also exceedingly good leadership under a captain who secured both school and city championships. Monroe defeated West High once and Aquinas Institute twice in dual school meets.

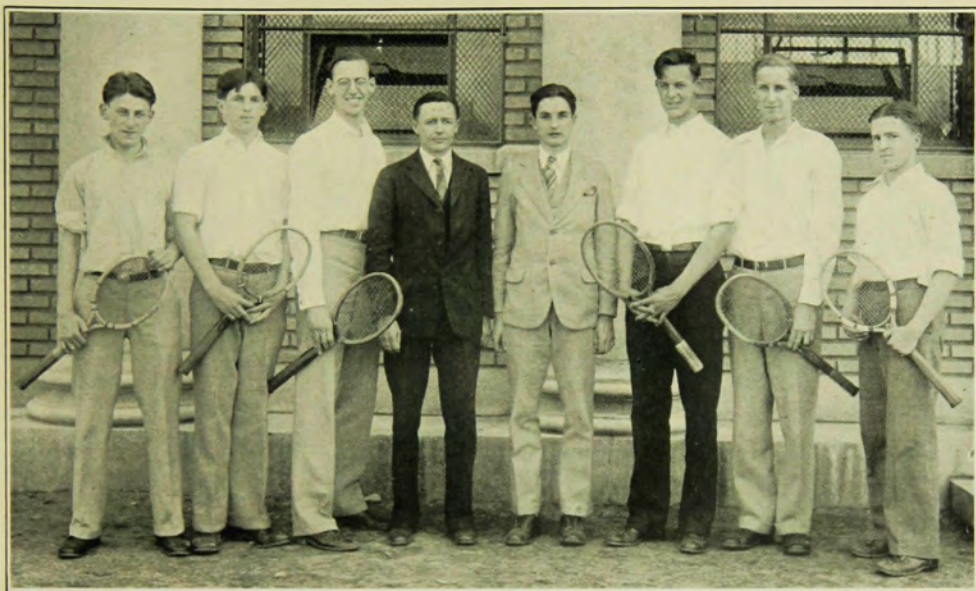
### SEASON SCORES

Monroe 8  
 Monroe 11½  
 Monroe 12½

Aquinas 7  
 West 3½  
 Aquinas 2½

*Inter-Scholastic*  
 Monroe High 680  
 East High 716  
 John Marshall 793





## Tennis

C. L. ACKLEY—*Coach*  
 WILLIAM MESSINGER—*Manager*  
 ROBERT CORRIS—*Captain*

### TEAM

William Merling  
 Alfred Daniels

William Messinger  
 Robert Corris  
 George Anderson

Wallace Ely  
 Edgar Tallmadge

### SCHEDULE

May 16 Monroe *vs.* Charlotte High  
 May 29 Monroe *vs.* West  
 May 30 Monroe *vs.* Central High, Buffalo  
 May 31 Monroe *vs.* Central High, Buffalo  
 June 1 Monroe *vs.* East High  
 June 8 Monroe *vs.* Technical High  
 June 11 Monroe *vs.* Marshall High



### *Girls' Basketball 1927-1928*

Betty Andrews  
Laura Biene  
Edith Bloom  
Marjorie Boddy  
Mary Boughton  
Marjorie Bushnell  
Eleanor Eesley  
Janet Haas  
Eleanor Horton  
Elsie Langley  
Winifred Lansing  
Margaret Lentkoop  
Cleo Mason  
Louise Meeker  
Kathleen McCahan

Ethel O'Brien  
Dorothy Oimisch  
Pearl Oppenheim  
Cecil Posner  
Marguerite Price  
Marjorie Reeves  
Thelma Richardson  
Genevieve Richardson  
Sara Roman  
Marion Sullivan  
Marcia Thayer  
Margaret Williams  
Virginia Thilson  
Margaret Wood  
Jean Woodbury



### Cheer Leaders



*Harry Bradley*

HARRY BRADLEY

LOCOMOTIVE

M-O-N-R-O-E

M-O-N-R-O-E

M-O-N-R-O-E

MONROE

MONROE

TEAM, TEAM, TEAM

VICTORY YELL

V-I-C-T-O-R-Y

V-I-C-T-O-R-Y

V-I-C-T-O-R-Y

V-I-C-T-O-R-Y

MONROE, MONROE, MONROE

TEAM, TEAM

DOUBLE LETTER

M M - O O - N N - R R - O O - E E

M M - O O - N N - R R - O O - E E

MONROE

MONROE

CHEERLEADERS

CHEERLEADERS

CHEERLEADERS



JERRY ELLIOTT



*Grace S. Babcock*

*M. Pooler*

*Coaches*

LEWIS A. MICHELSON

BURNS W. BEACH

LEILA ASHLEY

JOSEPH ULRICH

MABEL POOLER

PHILLIP SCHNEIDER

ARTHUR NEFF

GRACE S. BABCOCK

There is a vital part of the Monroe athletic teams that is not seen on the playing field. There is an unseen and often unthanked group that puts Monroe High athletes in the light of fame. To them,—the coaches of Monroe High School—to whom is due much of the credit for the school's splendid teams, the student body now extends its thanks and its appreciation.





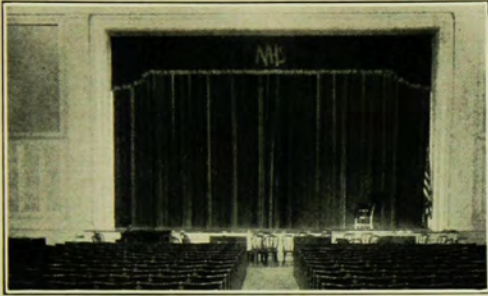
*Melvin E. Brandford*

# FEELATHURS



Can You Pick Them Out? 1—Carl Paul 2—Lucile Brewer 3—Charles Hunt 4—Edgar Present  
 5—Sarah Clark 6—Marguerite Weiner 7—Jack Kimble 8—Frank Bowie





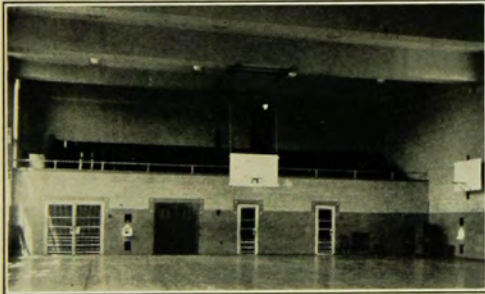
ASSEMBLY HALL

*...Views...*

*...of...*



LIBRARY



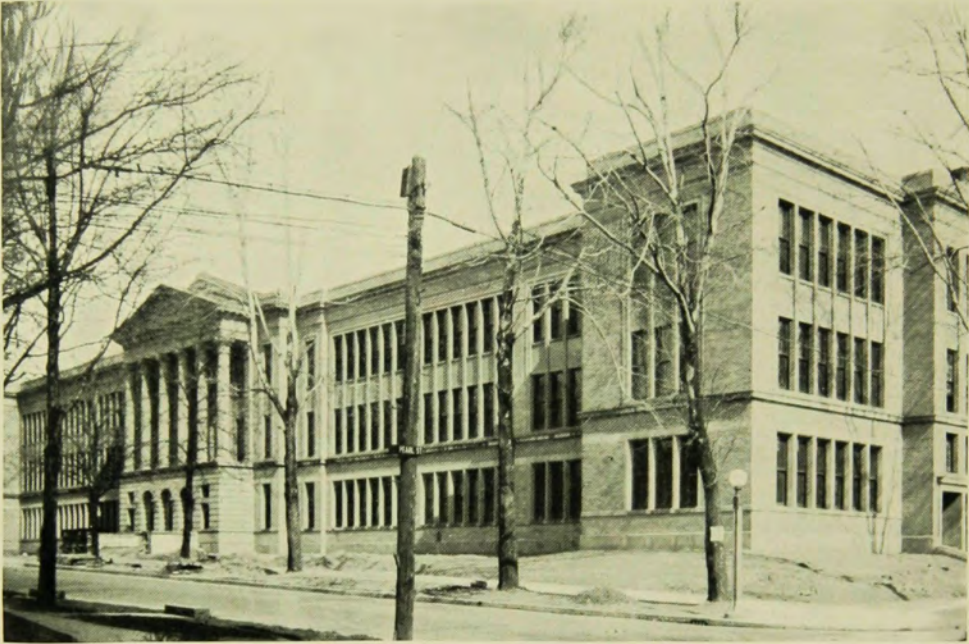
GYMNASIUM

*...the...*

*...School...*



CAFETERIA BUILDING



MONROE HIGH SCHOOL



WILLIAM E. HAWLEY—PRINCIPAL, MONROE HIGH SCHOOL

1928



LOYALTY SONG



We're loyal to you, Monroe High,  
We're loyal and true, Monroe High  
We'll back you to stand  
'Gainst the best in the land  
For we know you have said, Monroe  
High, rah rah.  
Then break up their plays, Monroe  
High,  
Go rushing ahead, Monroe High,  
Our team is our fame protector,  
On, boys, for we expect a victory from  
you, Monroe High.

ALMA MATER



Hail our Alma Mater,  
Hail, oh hail, Monroe.  
Thoughts of thee we cherish,  
As through life we go,  
  
Red and blue our colors,  
We thrill to see them fly  
They stand for all that's best  
within us,  
Hail to our Monroe High.

MONROE PLEDGE



We sing to Monroe High School,  
Her name we will revere—  
We, our sons and daughters  
Er're her honor will hold dear.  
We love her colors proudly flying  
Victorious Red and Blue,  
Our all we pledge to Monroe High  
School,  
Our Monroe to you.

HAIL TO MONROE



Hail to Monroe the name we hold so  
dear  
Homage in song we offer now to thee,  
We thy sons and daughters gather  
here  
Proud to pledge our loyalty—  
Shoulder to shoulder as the years go  
by,  
Faithful to friendships tested o'er and  
o'er,  
True to comrades found in Monroe  
High,  
Hail Monroe, Hail Monroe, evermore.

*Best Wishes  
Alma Grayce Miller*

## *What the Old Grads Are Doing*



Fred Kates, June '27, is president of the Freshman class at Amherst College. He is also on the school honor committee.



John Williams, June '27, is captain of the Freshman Polo team at Dartmouth. He also took a part in Shaw's "The Dark Lady of the Sonnets."



Louis Roger, June '27, is president of the Freshman class at Alfred. He has organized a jazz orchestra for school occasions.



Fred Draper, June '27, played on the Freshman Soccer team at Yale University.



Ted Benedict and Lawrence Sterling are taking P. G. courses at Monroe.



Ten Eyck Munson, June '27, is in the Glee Club at the University of Rochester.



Helen Green, Elizabeth Schieble and Emily Wilsea, June '27, are on the honor roll at the University of Rochester.



Powell Beyland, June '27, is active in student affairs at Cornell University. He won the highest mark in the Freshman class in the Engineering College.



Harry Powell and Brewster Bastian, June '27, are attending Cornell University, where they have done much in class work.

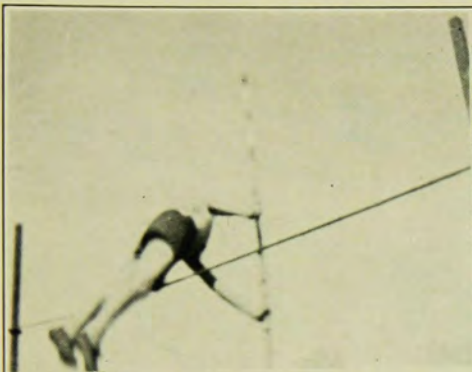


Clifford Field and Kenneth Taylor, June '27, are enrolled in the Electrical Co-Operative course at Mechanics Institute.



Merlyn Ringwood, June '27, is enrolled in the Archetctural course at Mechanics Institute.





Monroe High Track  
Team Defeats Tech  
Athletes, 59-31

**BILL DEAN WINS  
MONROE HIGH'S  
GOLFING TITLE**

Monroe Runners  
Defeat Orientals

Monroe Runners  
Defeat Orientals,  
Score, 54 To 36

*Interscholastic Reserve League Champions*

Golfers At Monroe  
High Have Heavy  
Schedule This Week

**SWIMMERS TO  
HAVE MEET IN  
MONROE TANK**

Monroe High Turns  
Back Bay Outfit in  
Seven-inning Game

Cross-Country Men  
Have Practise Run

Monroe Reserves  
Beat Tech Outfit

**MONROE THIRD  
IN BIG MEET;  
ORIENTS FIFTH**

Monroe High Scores  
Nine Runs in Fifth  
Frame to Win, 15-6

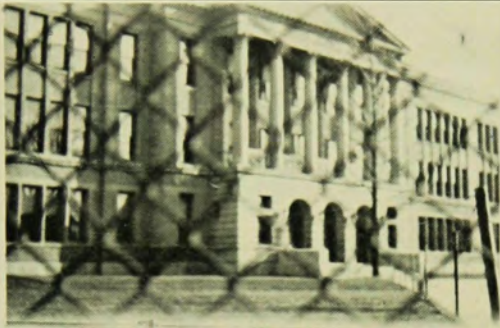
Monroe Wins Over  
Tech Nine, 5 To 4



Monroe Reserves  
Defeat West, 39-11

Court Prospects  
Bright At Monroe





School?

**JUNIOR AND SENIOR ORCHESTRAS PROGRESS**

Both Organizations Perform on Assembly Programs

**INTER-CLASS DANCE SCORES BIG SUCCESS**

Orchestra. Proves Popular

**Industrial Boys Given Certificates For Their Work in Practical Arts**

**Senior Annual Ready May 23**

**National Oratorical Enthusiasm of Monroe**

**STORY CONTEST JUDGES RECEIVE MANY ENTRIES**

Last Call for Stories

**ENGLISH PLAY TO BE GIVEN HERE, MAY 16**

Pupils To Get English Version

**"Pencil Pushers" Hold First Super Conference**

**HEAR FRANK OTTE**

Club Plans Future Meetings in School

**ART STUDENTS' WORK MERITS HIGH HONORS**

Composition of Four Students Appear in "Design"



Yes!



## Looking Backward



Cafeteria Building in Construction



An Early Journalism Class



Yacht Club at Lake Riley

# SCHOOL FOR OWLS





12 B 1, Room 168

Teacher, Mrs. Strayer

President, John P. Nell

George Anderson † * ‡	Calvin Mohr *
Mildred Bauman † °	VanVoorhis Munson † °
Ruth Bridgman † *	John Nell † * ‡
Parker Bridges † *	Miriam Pheteplice † *
Harold Berlove	Porter Ramsey †
Marguerite Conradt †	Helen Revier
Esther Ficker † °	Allen Rubens *
Minnie Finn	Robert Smith * †
Robert Hettig †	Ruth Stackel †
Maurice King *	Helen Stewart
Jean Murphy	Jane Swaim °
Anne Lebowitz	Leo Sweet *
Janet MacFarlane	Edward Webster
Richard Marks †	Eleanor Welch
Richard McKay	Jack Weinberger

Erma Zimmerli

12 B 2, Room 169

Teacher, Miss Leete

President, Howard Palmer

Ethel Anderson †	Howard Palmer * ‡
Virginia Bosworth †	Phyllis Playford *
Marjorie Bushnell *	Henrietta Recklinghouse
May Cohen *	Edward Renshaw *
Stewart Comfort *	Jane Rogers † *
Sylvia Goldstein † *	Raymond Schaap
Irving Jacobs *	Florence Schenberg † *
Marian Latz †	Theodore Schulz †
George Leader *	Mildred Schutt *
Susan Lipsky	Jane Simon †
George Mayo † *	Wilbur Sprague † *
John Millard †	Betty Swarhout † *
Marjorie Moore	Janet Middleton
William Murlin	Charles Vaughn *
Lawrence Paley † *	Lee Whitney

Kenneth Zimmerli †

11 A 1, Room 167

Teacher, Mrs. Stolbrandt

President, Rosamond Lockwood

Isabel Asmuth *   °	Helen Southworth *   —
Mary Atwater   °	Jane Stutson
Henrietta Betlem	Frances Vaisey *
Ruth Cannon †	Frances VanSchaick † *
Edith Cook *	Marian Watkins
Lois Crissy *	James Bedford * —
Olive Frank	Francis Foster * °
Carolyn Kline	Seymour Gray † * —
Doratheia Lauterbach	Mark Johnstone * °
Harriett Lee	Barnet Levy *
Rosamond Lockwood † —	Kenneth Paul † *
Edwina McCullough	Irving Posner † * °
Dorothy Oemisch *	Joseph Stull *
Ruth Schoenberg	Ward Whipple † * —

Robert Winslow \* °

12 B 3, Room 163

Teacher, Mrs. Herron

President, Paula Gates

Celia Balch	Lucille Castranova
Sylvia Berman	Marie O'Connell
Marjorie Bristow	Mercia Stone
Dorothy Anger * ‡	Marjorie Ward
Alma Bush	Jean Chaintreuil † *
Florence Cooper	Louis Cirrincione
Hazel Eberwien	Lee Corrigan
Paula Gates ‡	Bernard Drexler †
Marjorie Girk	Raymond Field *
Janet Haas *	Carroll Lowe *
Leona Height	William McMunn
Florence Hutchings	William Messinger *
Ethel Joroslow	John Parker * °
Anna Kohls	Charles Playford *
Ethel O'Brien *	Alfred Rabjohns
Arnold Rubenfeld	William Scott *

Colman Knope

KEY—Honor Roll † Homeroom Athletics \* Homeroom Officer ‡ Band or Orchestra ° Glee Clubs | Dramatics —

11 A 2, Room 102      Teacher, Miss O'Connell

President, John Keeler

Gordon Bell	Nellie Kryger
James Bell	Ruth McVicar
Mary Costello	Flora Mannhardt
Anna Estlick	Sol Marcus
Paul Ewell	Helen Meyer
Natalie Firestone †	Ella Mills
Louis Flanders †	Hiram Neun †
Charles Gay	Virginia Pierson †
Charles Haas	Alice Regan
Helen Horton ‡	Matilda Reinhardt † ‡
John Keeler	Harriet Rippy †
Mary Kelsey †	Janet Stainton †
Gerald Kirshbaum	Marion Weiss †

11 A 3, Room 103      Teacher, Miss Abbott

President, Robert Beyland

George Baker	James Thompson *
Taylor Bell	Helen Louise Anderson
Robert Beyland	Fay Caplan
Jack Cook	Genevieve Carlson
Leon Goldsmith	Cora DeKan
Richard Goodchild †	Elizabeth Bobry
George Hackett	Bernice Gottfried †
Jack Houseknecht *	Mary Haley
Parker Lyman	Helen Kohler
Wilson McWilliams † *	Rita Lawler
Leslie Mooers	Margaret McHugh
Donald Nobles *	Minnie Sargawitz
McLean Russell *	Vera Sauer
Richard Sengle † *	Ruth Stopeck †

Special: 100% Monroe Life Sales

11 A 4, Room 101      Teacher, Mrs. LaWall

President, Alan MacNab

Frank Argenio	Louise Claesgens
Henry Blake †	Mary Dawson
Rolison Bostwick	Thelma Derby
Ralph Dewey *	Deloris Durkee
William Foster	Selma Frankewich
Henry Gibson *	Dorothy Gallant
Robert Johncox	Harriette Goldman
Gerald Kennedy *	Selma Goldstein †
Charles Knecht	Ruth Horner †
Leon Kushner *	Lucile Milas
Alan MacNab *	Matilda Salter
Harold Rohricht *	Lavera Smith

Irene Teklin

11 A 5, Room 100      Teacher, Miss Schneeberger

President, Howard Siller

Katherine Blackmon	Rifla Rotenberg
Virginia Cline	John Schubert
Ella Claire Feiock	Howard Siller †
Amy Gorwaiy †	Helen Simon
Mary Hetzel	Winifred Sleep
Richard Longhouse	Mildred Smith
Dominic Marseglia	Mary Thomas
Donald McNall	Grace VandeMar
Bruce Percy †	Mildred Weiss †
Eleanor Rehberg	Edith B. Young
Helen M. Rohr	Helen E. Young

KEY— Honor Roll † Homeroom Athletics \* Homeroom Officer ‡ Band or Orchestra ° Glee Clubs | Dramatics —



11 B 1, Room 272                      Teacher, Miss Maxwell

President, Wallace Cummings

Sam Carrousos	Phillip Schwarz †
Gerald Elliot *   —	Harmon Senzel
Charles Foster †	Orla Silco *
Bruce Gelser —	Harold Steidlitz
Sherman Gibson	Harold Thayer † *
Mack Griswold °	Hewlett Tilling *
Berthold Jacksteit †	Mary Boughton † * —
Bruce Jacobs	Thelma DeWitt
Nat Lawrence *	Jean DuBois
Robert Marshall † —	Ethel Klonick † °
Charles Martin *	Ellen Olsen
Elnore McKechnie	Elizabeth Riley †
Donald Reichgott	Mary Rogers † *
Bruce Ross *	Kathleen Skilton
Hubert Savage	Frances Smith
Margaret Wood * —	

11 B 2, Room 269                      Teacher, Miss Hartz

President, Paul Yaeger

Ralph Abramson *	Gladys Little — *
George Alexander †	Wanda Loeb †
Robert Burnham † *	Ethel Mabbett
William Carlucci	Evelyn Mower
Henry Christian *	Ruby Nicholson
Richard Coddington °	Margaret Pfaff
Roy Cromwell *	Melvin Rosenthal
Kernam Farnum * —	Gordon Rouse
William Ford   *	Martha Schubmehl —
Fred Francis	Alfred Shibly
Gabriel Given	Alfred Slotnick
Louise Hogan	Margaret St. John
William Karges *	Thelma Turner *
Frederick Kelley	Corinne Wicks
Adele Lefkowitz † *	Inez Wishman
Paul Yaeger °   *	

11 B 3, Room 265                      Teacher, Miss Farlow

President, Jack Powers

Douglas Anderson	Jack Powers † *
Arthur Carmichael *	Miller Simon
Robert Corris * †	Richard Volk
Alfred Daniels † *	Lewis Wallace
Fred Gilbert *	Marjorie Boddy *
Joseph Glasser *	Francis Clark *
Lawrence Green	Janet Edgar
Alden Herrick	Jone Edick
Eric Insley	Mabel Fleming *
Colman Knope	Jane Gordon
Daniel Kushner	Henrietta Hart
Sydney Locks	Betty Lighstone
David McEwen	Zelda Musk
Paul Peters †	Thelma Richardson *
Hiram Phillips	Ada Schoenberg †
Harriett Wait	

11 B 4, Room 263                      Teacher, Miss Bradley

President, Kenneth McLean

Doris Backus *	Joseph Allan *
Mildred Baldwin	Theodore Anderson
Ruby Case †	George Atwater
Mildred Engberg	Eugene Baney
Rhoda Hurwitz	John Bittiger
Helen Rodger † *	Robert Boorman *
Arline Schulz	Howard Drysdale *
Alice Schutt	Wallace French *
Arline Schwendler	Harold Gallant *
Fanny Sopp	Charles Geddes *
Lillie Swaim	Walter Gosnell
Beatrice Sweetland	Richard Hutchings
Ada Vernon †	Allen Masline *
Margaret Wermuth	William McVicar *
Ruth Williamson	Thomas Page
Jean Woodbury	John Woodbury
Irving McGuidwin *	

KEY— Honor Roll † Homeroom Athletics \* Homeroom Officer ‡ Band or Orchestra ° Glee Clubs | Dramatics —

11 B 5, Room 225

Teacher, Miss Osborn

President, Fredrick Rapp

Alecia Carlston	Constance Kimball †
Evelyn Brautigan	Ruth Kamman
Dorothy Boughton	Elsie Hensel
Arlyne Bloom	Mary Hall
Laura Beine *	Katheryn Oliver
Arax Ballarian	Bertram Silverstein *
Gladys Henderson	Elmer Siebert *
Ida Geldin	Loyal Sherman
Caroline DeZee	Archie Rosenthal
Marie L. Dean	Sam Dworsky *
Lillian Collett	Harold Walter *
Eugenia Morse †	Edward Twardokus *
Erma Leuhm	Joe Sturges *
Margery Leonard	Robert Snyder

Charles Snyder

10 A 1, Room 170

Teacher, Mr. Gates

President, Joseph Carey

Betty Andrews † *	Janet Makie
Wayne Barlow †	William Murdock *
Virginia Bourne †	Mae Murphy
John Branch	Josephine Mohr †
Elizabeth Cambier † *	Donald Mac Collum
Joseph Carey † * ‡	William Mantell
Robert Colborn † *	Shirly Olsan * †
Mary E. Daniels	Cecyle Posner † *
Volney Dennis	Dorothy Pearlman †
William DeMallie *	William Silverman †
Raymond Ely †	Marcia Thayer *
Anthony Fantaci † *	Jane Taylor
Marjorie Frankenstein †	Charles Walker
Richard Goldman † * ‡	Robert Hynes *
Elsie Hurvitz † *	Marion Shapero †

John Cushing \*

10 A 2, Room 264

Teacher, Mrs. Tallmadge

President, Ethel Baptist

Ethel Baptist *	Richard Burgess * °
Edith Bloom *	Charles Bridgman *
Dorothy Brown	Junior Bradstreet *
Roberta Darney	Angelo Castranova
Louise Ford	Donald Dutcher *
Janet Lines † *	Roy Ely
Velyda Mattern	Arthur Gale
Florence McAdams	Edwin Hartman *
Mabel Roger	Lawrence O'Connell *
Sarah Roman * °	Fred Miller †
Beulah Smith	Charles Pulse
Polly Saters	William Snell *
Virginia Wilson *	Joseph Shuman *
Mark Adler *	Russell Witherspoon *

10 A 3, Room 223

Teacher, Mr. Mather

President, Louis Volk

William Doell	Harold Knight
Wardham Collyer	Genevieve Thomas
Frances Fitch †	Leonard Sobie
Evelyn Clark	Reuben Spector *
Vera Spolan	James Robinson *
Liebel Engel	Emerson Creore †
Bertha Milbrandt	William Bushnell
Thelma Kershaw	Dave Dean
Chester Maynard *	John Kendall
Helen Sutter	John Dunning
Lexford Anderson † *	Maragaret Tutty
Frederick Rohr *	Gretchen Shantz

Louis Volk \*

Special: 100% Monroe Life Sales

KEY— Honor Roll † Homeroom Athletics \* Homeroom Officer ‡ Band or Orchestra ° Glee Clubs | Dramatics —



10 A 4, Room 222

Teacher, Mr. Cardew

President, George Kober

Nat Arnot	Lawrence Smith
Ralph Blachbum	William Lefflett
Shirley Blakeslee	Virginia Bennett
Donald Brown	Doris Burns
William D'Amanda	Ethel Curran
Marvin Gardner	Florence Darling
Warren Hastings	Mildred Goldberg
George Kober	Gladys Kahl
Harold Neun	Ruth Millstone
Philomena Pieza	Marie Neil
Bernard Rosenbloom	Charlotte Thomas
Lawrence Schooler	Maude Wilkinson

Jean Williams

10 A 5, Room 202

Teacher, Miss Spurr

President, Herbert Harvey

Norman Collyer	Dorothy Hanan
Alice Carmichael	Robert Rice
Helen Renckert	Estelle Peets
Freda Boas	Harry DeBlawe
Doris Pickett	Howard Woodhead
Kenneth Cobb	Catharine Brown
Winifred Lansing	Sidney Wilson
Helen Ruthven	Jack Erdle
Oliver Zinsmeister	Robert Smith
Horace Little	William Hubbard
Herbert Harvey	Frank Watson
Lucile Shieter	Milton VanDusen
Helen Durfee	Charles Webb
Margaret Sinare	Louise Lynip

10 B 1, Room 230

Teacher, Mr. Wallace

President, Robert Stakel

Edgar Bell	Rudolph Rohricht
Homer Davey † *	George Swarthout
Milton Drexler †	William Welch *
Leon Germanow	Elinore Appelbaum † *
Bernard Goldstien *	Marjorie Deninger † *
Irving Guttenberg	Eleanor Eesley † *
Charles Hellebush	Mary Eidam †
James Hutchison	Mary Flanders
William Lee *	Eleanor Horton † *
Lawrence Luescher	Selma Kahn *
Howard Nemerow	Feresa McGrath
Joseph Nobel *	Frances Murlin †
Edmund Randolph	Janis Saulsman
Jacque Sloan *	Anne Stark †
Robert Stackel † *	Doris Taylor
Wilson Sterling	Marian Walker *

Alice Jane Saunders †

10 B 2, Room 203

Teacher, Miss Manwaring

President, Jean Ewell

Lee Bahringer *	Jean Eastwood
Julia Baily	Helen Einissee *
Howard Baily *	Jean Ewell
Niles Balch *	James Fisher *
Edna Baschnagel † *	Marion Higbie *
Clara Louise Bock *	Florence Hoffman *
Robert Bowie *	Edward Hunt
Loraine Bradshaw	Bernice Jewitt
Elizabeth Cushman	Walter Price
Eleanor Duryea	John Tullack
Robert Duryea	Gretchen Wilcox *

Edward Willsea \*

KEY— Honor Roll † Homeroom Athletics \* Homeroom Officer ‡ Band or Orchestra ° Glee Clubs | Dramatics —

10 B 3, Room 271

Teacher, Mr. Rusin

President, Marion Sullivan

Alethea Bell	John Fabry *
Laura Brown	Gordon Harris †
Ruth Clark	Martin Horsey
Evelyn Cooper	Alexander Kennedy
Mary Dunning *	Edward Kochenthal *
Grace LaShomb	Louis Maier *
Carolyne Neiser	Ernest McWilliams
Rolina Nichols	Gordon Montgomery *
Pearl Oppenheim *	Walton Rice
Edna Perkins	Everett Snow *
Peggy Richardson *	George Snow
Dorothy Seaman	Howard Strutz
Marion Sullivan * †	Kurt Werner *
Louise Meeker *	Ralph Wolf *

10 B 4, Room 229

Teacher, Mr. Flemming

President, Kathryn Kinsky

Loyd Bagley	Junia Burford
Leonard Cohen	Bessie Curry
Richard Curtin	Virginia Gregory *
Everett Davis	Dorothy Johnston †
William Fowler	Loretta Johnson
George Gotham	Kathryn Kinsky
William Normand	Cleo Mason * †
Frank O'Connell	Kathleen McCahan *
Aaron Salem	Lillian Morse
William Young	Alice Nixon
Gerald Wilson	Marjorie Reeves *
Gladys Ash	Lucille Robinson
Minnie Balsamo	Gertrude Tesch
Mildred Bengé	Marion VanSchuyver

Helen Winkler

Special: 100% Monroe Life

10 B 5, Room 125

Teacher, Miss Dumas

President, Vera Lake

Vera Lake †   ° *	Marguerite Price   *
Anne Curtis *	Irene Welsh ° *
Marie Forman	Collette Webster
Louise Doran	Suzanne Gube
Doris Cain	Lucille Ryan *
Mildred Stopeck	Mary Livingstone
Dorothy Vaisey	Edna Smith
Dorothy Friz	Marion Dean
Inne Henz	Marjorie Donahue
Irene Putnam	Frances Corti
Jane Kleinberg *	Frances Daley
Elsie Courtright	Elsie Tuccy
Ruth McCarthy	Elizabeth Webster

L9 A 1, Room 326

Teacher, Mr. W. Saunders

President, William VanAllen

Betty Brewer *	Edith Telford
Jane DeKan	Virginia Townsend †
Annabelle Findley †	Elizabeth White
Marie Finn † *	Allen Baker *
Florence Foster †	Wilson Battay † *
Lulu Johnston *	John Beckley † *
Dorothy McDonald *	Konrad Engel † *
Ruth Panslow *	Edmund Kaiser
Elanore Powell *	Burke Kline † *
Catharine Rippey †	Arnold Lasarus † *
Marian Rodenmayer *	Carl Manson *
Dorothy Salitan *	Frederick Meyer *
Margaret Sergeant †	John Nixon †
Helen Smith †	William VanAllen † *
Rose Steinfeld *	Charles Zutes † *

KEY—Honor Roll † Homeroom Athletics \* Homeroom Officer ‡ Band or Orchestra ° Glee Clubs | Dramatics —



L9 A 2, Room 333                      Teacher, Mr. Ackley

President, Arthur Desbrow

Lillian Alexander	Helen Hurvitz
Claire Meyer * †	Bernice Bernstein
Howard Hennington * †	Lois Stone
James Bassage	Charles Loyd
Roger Waugh	John McWilliams
Virginia Brack †	Phoebe Cornwall
Arthur Desbrow	Ralph Madden
Anne Wilder	Royal Tobey
Catherine Salo *	Charles Kennedy
Virgil Evans	Helen Thomas
Roberta McKay *	Winifred Border
Eleanore Dutcher *	Alfred Sheible
Carrol Johnston *	Margaret Dutton
William Flanagan	Edith Harmon †
Marion Chamberlain	Alice Fry *

F9 A 1, Room 231                      Teacher, Miss Furlong

President, Sidney Dorfman

Beatrice Becher	Alice Mullen
Kenneth Beers   —	Sherman Nelson †   —
James Cragg	Pauline Olds *   —
Francis Crawford	Howard Rogers
Ronald Doll °	Moly Rotenberg
Catherine Farnam *	Howard Seel
Edward Figiela	Eleanore Seith
Russell Fringer	Bernard Shoemaker
Widmer Grineisen —	Lucy Smith
Charles Hurlburt †	Raymond Stenzel
Marjorie Kaufman —	Mary Stewart †
Marguerite Klinke *	Evelyn Theis †   —
Ernest LaDue	Gerald Turk
Willard Lisson —	Marion VanArsdale *
Arthur Merz *	Ruby Warren * †
Rosemary Morgan * —	Peggy Yost * —

Special: Hit Pin Champions

C9 A 2, Room 365                      Teacher, Miss Brassier

President, Laura Kerr

Jessie Ackerman	Ruth Lazarus *
Mildred Bloom †	Lorraine Millard
Vera Casciani † *	Jane Schulik
Elva Ferge	Alma Thomas
Lucille Cooper *	Edith Tucey
Frieda Francz † *	George Amey
Anna Gibson †	John Bourne
Ada Green	Leroy Gunn
Frances Hampson *	Harold Haefner
Marion Hofman	DeForest Harmon
Marion Hooch	Gordon McLean
Laura Kerr †	Kenneth Purtell *
Kathryn Lace °	Roger Repp
Marion Laing °	John Sercu

L9 B 1, Room 330                      Teacher, Miss Rowland

President, George Williams

John Alhart	Robert Witherspoon *
Jerome Brown † * —	Ruth Cohen † *
Horace Colis *	Ethel June Dennis † *
Richard Edgerton † * —	Vivian Flatau
Arthur Fisher *	Sylvia Gailar †
Marvin Klein †	Mary Greene † * —
Vartan Kooshian † * —	Betty Kelly *
Edward Lee	Josephine Lipsky *
Robert Marriotte * —	Marie Meyer † *
William Merwin † * —	Grace Moehlman † *
Melvin Neisner *	Dorothy Norton * —
Mortimer Nusbaum	Constance Siller † *
Irving Senzel †	Ruth Stevener †
John Stevenson *	Lois VanVechten †
George R. Williams * † —	Virginia Wenck

Ruth Whipple † \*

KEY— Honor Roll † Homeroom Athletics \* Homeroom Officer ‡ Band or Orchestra ° Glee Clubs | Dramatics —

L9 B 2, Room 335                      Teacher, Mrs. Kates

President, Laura Barron

Margaret Baily	Gertrude Schaller
Virginia Baily	Evelyn Teute
Laura Barron	Harrison Ball
Sally Girard	Charles Burnham
Betty Goldstein	Philip Garelick
Barbara Gosnell	Allen Haughwout
Hortense Kirshbaum	Wells Latta
Janet Loysen	Eugene Levine
Virginia McHugh	Jack Schenberg
Florence Pellow	Milton Smith
Mildred Reynolds	Ellis Turner
Thelma Robinson	Jason Wicks

David Will

L9 B 3, Room 321                      Teacher, Mrs. Ramph

President, William Moll

Roy Aberle °	Irving Taksen
Oliver Angevine	Manuel Temkin *
Richard Dean	Albert Woodhead *
Darwin Dunning	Howard Winslow *
William Eisenberg *	Jean Baily *
Charles Fisher † *	Ruth Brectchsneider †
Raymond Flanigan	Martha Clark
Hubert Frankenfeld †	Marjorie Ellis *
Alason Higbie *	Ruth Kammer *
Earl Homer °	Jane Medcalf *
Elliot Hose	Florence Monaghan *
Larence Hutt *	Jane Riley
Andrew Korts *	Vada Swetland
William Moll *	Ruth Tarrant *
Robert Shannon *	Sarah Schaick
Helen Wenah	Mary Dudley Wiley †

C9 B 1, Room 329                      Teacher, Miss Carey

President, Doris Scott

Helen Abraham	Anetta Lloyd
Bernice Baily	Valva Longale *
Ada Bechle *	Charlotte McKeon
Helen Bochus °	Bernice Ridley *
Naomi Carr *	Fanny Rosenberg *
June Dunkleberg †	Margaret Scheerens †
Marion Frank   * †	Doris Scott † ‡
Ruth Grossman *	Sylvia Snyder
Mary Ideman *	Marian Townsend
Doris Kinzel	Arvilla Voorhies *
Gabrielle Lane *	Marion Walker * †
June Emler ‡ * †	Virginia Webster

Special: Hit Pin Champions

LS A 1, Room 345                      Teacher, Miss Gigeo

President, Gilman Williams

Margaret Andrews *   —	Cortland Hartung * °   —
Sylvia Asnass † * °	Charles Hilton †   —
Barbara Backus †	Harper Kakinuma † *
Jean Banning † *   —	Betty Kling † * ° —
Gerald Bobry	Donald Mcdonald † *
Dorothy Borchard *	Ida Oliver † *
Frances Burns	Helen Parmalee † *
Theodore Colburn †	Alice Ramsay
Elizabeth Collins † *   —	Dorothy Rankin †
John Dale † *	Ruth Rubinson †
Rose Drexler †	Bertha Turton †
Ruth Findlay † °	Ruth Waugh   —
Webster Frances † *	Claire Will
Abram Goldstein †	Gilman Williams † *   —
Milton Greenburg † *	Thomas Wood †

Kenneth Young † \* °

KEY— Honor Roll † Homeroom Athletics \* Homeroom Officer ‡ Band or Orchestra ° Glee Clubs | Dramatics —



LS A 2, Room 377                      Teacher, Miss Leary  
 President, Nelson Rockwood

Extra Bridge	Lois Bowman *
Robert Cushman *	Jean Frankenstein *
Davidson DeCamp *	Miriam Gallant
Darwin Erdle	Marjorie Gillis † *
Robert Laing *	Doris Hendee † *
Charles Mason	Betty Heilbrum
Webster Morgan	Vera Horton *
John Munson *	Lorraine Lerner *
Samuel Peet *	Amelia Marks *
Willard Phetaplace	Barbara Olsan *
George Williams	Irma Paull *
Charles Zelter *	Ruth Pederson †
Marjorie Adams	Helen Probst † *
Virginia Allen *	Mary Smith † *
Doris Bohachek *	Mildred Smith †

Norma VanBuren

Special: Eighth Grade Champions—Girls  
 Boys' Basketball Team Undeclared

LS A 3, Room 343                      Teacher, Mrs. L. M. Smith  
 President, Thomas Farrell

Harriet Bates *	Frederick Cornwall
Elmeda Clark *	Thomas Farrell
Ruth Finn *	Richard Gale
Irma Goldstein	Dennis Livadas
Marjorie Herle °	Arthur Lynip
Evelyn Hustleby *	Elmer Miesch *
Katherine Joss *	Arthur Murrellwright
Carolyn Longrod *	Robert Perlstein *
Ruth Miller	Leo Rossiter *
Marion Slauson † *	James Rossiter
Naomi Stambough *	Donald Rugg † °
Eleanor Sullivan *	Herman Salitan *
Gerald Baker	Edward Trax
Bertram Cohen *	David Williams *

LS A 4, Room 302                      Teacher, Miss Stevenson  
 President, Ann Roosa

John Bareham *	Eileen Craggs *
Jack Clarke	Harriet Frank
William Ferris	Marjorie Gутtenberg *
Robert Kochenthal *	Elva Hansen   —
Donald Lum *	Lucille Hirschman   —
Hugh Miller *	Olivia Hodgson *
Harold Radell * °	Marie Hull
Walter Robinson	Annabel Kline
Dean Russell	Ann Roosa † *
Gordon Wells * °	Jean Rowe *
Richard Williams   —	June Schutt
Louise Brassler	Hazel Schuyler
Martha Caldwell	Helen Spaber * °   —
Lulu Coons *	Velma Spurr *   —
Kathryn Courright †	Helen Sullivan *
Adelaide Covell †	Carolyn White

CS A 2, Room 374                      Teacher, Miss Farrell  
 President, Raymond Printy

Carroll Blakeslee	Robert Mayer
Annalee Brown	Marion Mattice *
Henry Callahan	Irene Malnick
Katherine Casciani	Eric Ortolani
Katherine Connor	Elise Paeth
Louise Emsley	Jewel Porter
Gladys Farr	Raymond Printy † *
Katherine Frazer †	Dorothy Rhinesmith
Irving Haight	Vivian Ryan
Marjorie Jensen	Salvatore Scalia
Walter Kaile	Dorothy Schoeder
Bernice Klick	Alice Smith *
Albert Levine	Ruth VanDeMar °
Gertrude Maier	Charles Webster † °

KEY—Honor Roll † Homeroom Athletics \* Homeroom Officer ‡ Band or Orchestra ° Glee Clubs | Dramatics —

LS B 1, Room 376      Teacher, Mrs. Westburg

President, George Mirch † \*

Laurence Edelstein † *	Bertha Henderson *
Albert Katz *	Lillian Kahn *
Donald Lewis	Margaret Kellner † *
John Merchant *	Jane Lowell † *
Tom Plumb †	Dorothy May *
Burke Roach †	Jean McRoberts †
Carlton Spencer † *	Marie McWilliams † *
James Wareheim *	Ellen Patman *
Eleanor Alexander *	Lillian Platt *
Lila Benedict † *	Jean Porter
Leonora Benigson † *	Janet Remington *
Jean Cannon	Blanche Sercu *

Special: Hit Pin Champions

LS B 2, Room 303      Teacher, Miss Williams

President, John Grossman

John DuBois †	Robert Reed *
Edwin Bullough	Lorraine Firestone
Harvey Caplin	Virginia Grover
Leonard Cohen	Virginia Howland
George Cromwell	Ann Holahan
Burbank Engert	Esther Hurvitz
Verner Kreuter	Gertrude Kleinberg
George Lothian	Adele Levy
Ira Potter	Helen Mosher
Donald Philp	Marion O'Connell
John Peck	Jean Orbacker
Arthur Rosenbloom	Beatrice Reed
Frederick Schleber	Maxine Solomon
John Woolford	Katherine Stackel
Dorothy Brown	Ann Yeisley
Bella Schenberg †	Jessie Wagner
Katherine Cook *	William Posner

LS B 3, Room 375      Teacher, Miss Widmer

President, Charles Mower

Lee Geismer * †	Winefred Hoeflin
Stanley Goldstein *	Gloria Knudsen
Andres Holm *	Ruth Laidlaw
Milton Joffe *	Lois Lanne *
Stanley Levey †	Marion McCarrol *
Gerald Manchester *	Jean Pennington * †
Ray Mayo *	Marion Renckert
Charles Mower †	Geraldine Rose *
Richard Rummier †	Irma Rubens
Marguerite Benton	Jane Scott *
Carolyn Bostwick	Marjorie Simpson *
Edna Clark	Ruth Stiedlitz
Ida Crans *	Gertrude Sterling *
Leona Edekstien * †	Ruth Vick
Sylvia Gray	Ada Wright

7 A 1, Room 323      Teacher, Miss Schantz

President, Inez Suckle

Betty Adlam †	Marjorie Mack
Charles Bailey	Miriam Manson †
Eleanor Bailey	Robert Manuel
Kenneth Barons	Louise Morgan † †
Robert Bloor	Russell Phelps †
Donald Browne † †	Laura Jane Pire
Barbara Curtis	Richard Rush
Margaret Dakin	Ruth Schlosburg †
Virginia Dart †	Mildred Schoenheit †
George Dutton †	Harold Senzel †
Frances Ensign †	Jack Sheffield
George Francis	Margaret Shulz
Mary Alice Gage	Inez Suckle †
Leonard Gottfried	Marion Thomas † †
Helen Hatch †	Susan Vogt
Raymond Hider	Thomas Wallace

Lois Willsea

KEY—Honor Roll † Homeroom Athletics \* Homeroom Officer ‡ Band or Orchestra ° Glee Clubs | Dramatics —



7 A 5, Room 325

Teacher, Miss Mann

President, John Boothby

Fenton Beisheim *	Miriam Klonick * ° †
John Boothby —	Helen Maier *
Beatrice Bronson ‡	Millard Palmer
Doris Fogin	Kenneth Schonheit
Huntington Fox	Deloris Schulty
Armand Goldstine	Edna Smith
Dale Grenolds *	Hazel Smith *
Eleanor Holloway *	Leona Smith
Alice Howell * †	John Spring *
Marjorie Jackson *	Loretta Tarrant
Wilhelmina Jansen *	Elmer Travis
Dorothy Kennedy *	Frederick Treiter
Norton Kurlansky * †	Janette Voisey
Thelma Goldstein *	Edward Wood *
	Mina Wydler *

7 A 2, Room 378

Teacher, Miss Madigan

President, Bennie Rosenthal

Esther Allyn †	Janet Tibbils
Helene Berman † ‡	Sylvia Weist † *
Frances Bernstein *	Joseph Barnes †
Eunice Bicksler   —	Frank Boas *
Clarinda Brandt	Louis Durkee
Dorothy Clifford *	Richard Fowler
Lillian Drexler †   — *	Charles Harris
Ruth Gustafson † *	Herbert Holtzman *
Helen Jacobsen †	Stanley Joffe
Ruth Koerner *	Benny Rosenthal * †
Thelma Luehm *	Charles Sahler
Marjorie Mathes   * —	Shepard Shayne
Isabel Posner †	Scott Sterling † ‡ *
Reva Schoenberg † —	Frank Valyear
Evelyn Schultz *	Donald Vogt
Violet Sivola † —   °	Robert Webster *
Eleanor Stone *	Pardon Williams

7 A 6, Room 324

Teacher, Miss Parker

President, Jean Murat

Alice Bailey *	Ruth Westfall *
Dorothy Bauman *	Beatrice Levine * °
Eleanor Cooper † *	Stanley Baker
Clementine Coy *	Raymond Brown *
Mildred Daniel	Irving Drucker *
Pearl DeWick	Edgar Fahrer *
Betty Kick	Sidney Garelick *
Estelle Lavner †	Mike Krajowsky †
Jane Macdonald †	William Miding
Jean Murat † *	Eugene Miller
Mildred Taylor *	David Millstone *
Gladys Weller *	Arthur Palmer *
Arline Whitehead *	Alan Smith
Adelaide Holder	Elmer Taylor *
Evelyn Robert	Donald Williams

7 A 7, Room 322

Teacher, Miss Murray

President, James Geraghty

Floyd Bedour *	Catherine Wiehman
Jack Bowie *	Leo Van de Sande
Elisha DeVries	Paul Wolk *   —
Thomas Doolan	Mildred Barrett *
Joseph Finzer	Margaret Brumber *
James Geraghty *	Jessie Estlick *
Nicholas Ivanushka	Marjorie Karle *
Jack McCann *	Jean Korndoerfer
Bernard Mitchell	Mary Laman
Walter Oppelt *	Alice Morse *
Justin Price	Ruth Phillips
Paul Smith ° *   —	Marion Rogers *
Seth Strait	Helen Schugars *
Martha Stubblefield	Jane Smith †
	Phyllis Smith *

KEY—Honor Roll † Homeroom Athletics \* Homeroom Officer ‡ Band or Orchestra ° Glee Clubs | Dramatics —

## CABINET DEPARTMENT

Mr. Rockcastle

Nothing can determine more the degree of success the vocational work is making than the length of time a pupil is willing to remain for instruction. The Cabinet Department has a record unequalled. Since the school began, five years ago, the progress of the department has been very noticeable. There has been a constant effort to produce a higher type of work and better quality.

The boys in the shop and the number of terms they have attended are listed below. The list is headed by Charles Frank, who has been in this department five years.

Charles Frank	10	Charles Stubbe	4 ††
William Eisenberg	7	Henry Goldenshuh	4
Thomas Agniben	7 ††	Arthur Owen	3 ††
Herbert Page	6	Harry Harrington	3
Nelson Sengle	6 ††	Earl Warren	3
Clayton Meyers	6	Henry Bellinger	3
Vincent Vazzano	6 ††	Clayton Weller	3
Elmer Smith	6	Jerry Johnson	2
Wells Carey	5 ††	Howard Joss	2
Lewellyn Weekes	5	Robert Buck	2
William Baily	5 ††	Kenneth Dorfner	2
Herman Koopman	5	Herbert Remming	2 ††
Carl Irons	5 ††	Floyd Burgess	2
Edward Winter	4 ††	George Tutty	1
Harry Jonson	4	Russell Baum	1
Ronald Wilson	4	Paul Rice	1

Louis Erholdt    1

†† Perfect Attendance.

## COMMERCIAL ART DEPARTMENT

### MORNING

Robert Armour	Jack Nixon
Pierre Campbell	Harold Peterson
Norman Davies	Harry Sherwood
Robert Day	Frank Sloan
Leon Eisenberg	
Salvatore Frisa	Helen Avery
Steven Herbert	Ethel Curran
Irving Levinstein	Helen Proudfoot
Robert McCleary	Ella Sayyeau
Raymond Land	Helen Simon
John Mertz	Genevieve Thomas
	Eva Watson

### AFTERNOON

Prosser Bassett	Robert Siebert
Frank Frey	John Stanton
Henry Goebel	Borden Stewart
Donald Hess	Tom Sullivan
Theodore Jacobson	Paul Vonhold
Robert Kinney	
John MacQuarters	Virginia Bennett
Wm. Mitchell	Laura Clark
Ross Neill	Elizabeth Forgue
John Noyes	Eva Pardy
Carl Pribus	Helen Suter
Frederick Redfield	Harriet Thompson



I-10A-7, Room 142

Teacher, Mr. Dudley

President, Theodore Jacobsen

Charles Alger †	Harry Latine
Arthur Arthurton †	Hyman Levine
Harry Bohrer	Jay Niver
Wells Cary †	John Noyes
Donald Clark	Herbert Page
Lyell DeWick	Richard Pappert
Wesley Dibble	Carl Pribus †
Allan Faragher †	Clarence Pribus †
Albert Fenevessy	Fredrick Redfield
Edward Gommell	George Russel
Rozario Guzzetta †	Alexander Saperstone
Alexander Gresens †	Elmer Smith †
John Hacket	Vincient Taylor
Theodore Jacobsen †	Paul VonHold †
Wesley Johnson	Clayton Warren
Theodore Kwasman †	William Worenly

Special: 100% Monroe Life Sales

## ELECTRIC SHOP

Students and Number of Terms in Shops

A. M.		P. M.	
S. Bridge	9 †	W. Beaching	2
C. Beam	4	P. Brunner	1
P. Castranova	3	C. Bauman	2
E. Drexler	7	A. Comstock	3
A. Fenyvessy	2 †	A. Cachia	1
C. Guerin	4 †	E. Curry	1
F. Gleichauf	4	R. DeVoiat	3
J. Hackett	6	R. Dunn	2
W. Hendrickson	2	J. Gosnel	3
C. Jordan	2	R. Gowan	1
T. Kwasman	3	E. Hendrickson	2
W. Morgan	3	H. Johnson	1
L. Morton	4	L. Jacobson	3
R. Pappert	4	R. Keymel	2
H. Pratt	7	J. Malony	3
S. Rosenthal	2 †	G. Rosenbaur	1
L. Stevens	2	G. Perthel	3
F. Sommers	2	R. Schmidt	4
H. Westgate	8	H. Searles	4
C. Warren	3 †	E. Skinner	2
J. Niver	6 †	H. VanHove	2
R. Thomas	2	L. Williams	1
H. Van Valkenberg	8 †	L. Revier	1

W. Gagner 1

Under the expert supervision of Mr. Ralph N. Seely, the Electric Shop has developed rapidly. From the fundamental stage the pupils progress until they become practiced electricians. Some of the more advanced students are working on storage batteries, motors, radios, and transformers.

At the past exhibit of Industrial Arts the electric shop was the main attraction and those interested are asked to visit the shop or attend the next exhibit which will be held May 17 and 18 at Monroe High School.

Mellie Oate

Horace C. Liu  
Ⓜ Ⓢ

Phyllis Playford  
"Phild"

Tarker Lyman  
Ⓜ

General (Museum)



Wm. Ormond Ford Bullis

Leslie Mooers  
KED

"Midge"

Simpson

Jane Sloman

Martha Caldwell  
Eleanor Smith















3 9077 05025 7099